

**Scottish & Southern, Boddam Power Station, Peterhead,
Scotland**

Frame 9 Gas Turbine Unit Evaluation Report

For

Energy Trading Group FZC

TTS Job # 2009-60-2180

TABLE OF CONTENTS

<u>Section</u>	<u>Description</u>	<u>Page</u>
1	Executive Summary	3
2	Daily Log	6
3	Observations on major equipment and systems	7
4	Conclusions	16

1. EXECUTIVE SUMMARY

Overview

Turbine Technology Services (TTS) was contacted by Energy Trading Group FZC with a request to review the status of two Frame 9B gas turbine units at the Boddam Power Station, near Peterhead, Scotland.

The visit was not intended as a detailed equipment survey since no borescope was being carried out and no unit test runs could be undertaken during the visit. The purpose was to perform an overview of equipment condition, to review the operational and maintenance records for the units and to review site drawings and documentation. TTS engineer, Patrick Begley, traveled to Peterhead and spent two days assessing the current condition of the unit, reviewing operating and maintenance records and unit documentation.

Summary Site Status

Site records show that the 2 General Electric (GE) Frame 9 units were commissioned in 1992. The units are Model PG9161E (Frame 9E) open cycle units with water injection for NOx reduction. They are ISO rated on gas at 116.4 MW base and were designed to run on the local Miller Field sour gas with No. 2 distillate fuel as a backup.

Both units have been operated in a peaking mode of operation where the number of fired hours per start are low and the recommended determinant in the scheduling of maintenance is the number of starts and emergency stops.

The operating permits for both units have now lapsed so the units are no longer in commercial operation. They were last started for a test run on 2nd September 2008 and both reached base load during this run. The data available from site for these runs indicated that both units had reached or exceeded 115 MW during the test run. Unit 3 now has 14,668 fired hours on 718 fired starts (30 hours/start) and Unit 4 has 15,583 fired hours on 717 fired starts (31 hours/start).

The units are being actively maintained. Weekly checks are being carried out, the generator and starter motor heaters are operational and the units are cranked once every fortnight.

Both units are housed in a single, dedicated building complete with overhead crane. Each unit is basically a self-contained power plant comprising a gas turbine-generator, main step-up transformer, and individual cooling, water, fuel and control and protection systems.

The units appear to be completely intact and there were no obvious deficiencies or missing items. Both control systems still show the units as being in a "Ready to Start" condition. In addition there are a number of capital and consumable spares available for the units as are some of the special tools required for turbine maintenance. There also appeared to be at least one complete set of unit documentation, drawings and specifications available at site.

Cosmetically, the units were in excellent condition with no major areas of corrosion or damage evident anywhere. In addition the maintenance records appear to have been well maintained and inspection reports on major unit overhauls and repairs were available.

Unit 3 had a Hot Gas Path inspection carried out in 1997. No significant defects were found or noted at that time. This unit then had a major inspection carried out in 2003 and a number of components were repaired or replaced during that inspection. The unit has accumulated 584 fired hours and 140 fired starts since this last inspection. No borescope inspection has been carried out on this unit since this major overhaul.

Unit 4 had a Hot Gas Path inspection carried out in 2000 and a number of components were repaired or replaced during that inspection. The unit has accumulated 2547 fired hours and 239 fired starts since this last inspection. The last borescope inspection on this unit occurred in December 2003 and its conclusion was that all of the components were still in serviceable condition until the next scheduled outage.

Major Observations

As noted above, the units are in good condition and have been well maintained. Cosmetically, the units are in excellent condition.

Inspection criteria for these units are based on either hours or starts. In the case of both these units there are relatively few operating hours and the number of starts and trips from load are the determining factor in deciding when outages should be undertaken.

The starts-based GE criteria for inspections on these units is typically:

- Hot Gas Path Inspection: 1200 starts
- Major Inspection: 2400 starts

and hours-based criteria for inspection of these units is typically:

- Hot Gas Path Inspection: 24,000 hours (dry operation)
- Major Inspection: 48,000 hours (dry operation)

Given this criteria, both units have undergone hot gas path and major inspections in much shorter intervals than is required by GE. This is consistent with what appears to be a very proactive and conservative maintenance philosophy on the part of this owner.

GT 3; This unit underwent a major inspection at 578 starts. The inspection was carried out based a recommendation to replace 1st stage shroud blocks and 2nd stage nozzles made following a borescope inspection in December 2001. The inspection was finally completed on 24th March, 2003 and the unit has been started 140 times since then with only 11 emergency stops. Total fired hours since the inspection are 584. This would indicate that based on the raw GE inspection criteria, the unit is approximately 1000 starts or at least 12,000 hours (assuming wet operation) away from its next hot gas path inspection.

GT 4; This unit underwent a hot gas path inspection at 478 starts. A previous borescope inspection in March 1999 had identified some cracking in the 1st stage bucket tips but this did not appear to be a direct driver for this outage. The inspection was finally completed in October 2000 and the unit has been started 239 times since then with only 11 emergency stops. Total fired hours since the inspection are 2,547. This would indicate that based on the raw GE inspection criteria, the unit is approximately 950 starts or at least 10,000 hours (assuming wet operation) away from its next major inspection.

The unit underwent a borescope inspection December 2003 and all the components were found to be in a condition that would allow them to continue operating until the next scheduled outage.

Given that it has been several years since the last borescope inspection on either unit, it would be prudent to schedule a borescope inspection as part of the relocation process to identify if any further maintenance tasks needs to be scheduled as part of the relocation.

Fuels; The units are currently configured to run on the local Miller Field sour gas and no. 2 distillate fuel. The presence of H₂S in the local gas has meant that additional safety features have been incorporated at this site which may not be needed at a site using standard natural gas. The presence of H₂S may also have had an impact on the life of the internal components. Given that the unit is likely to be run on natural gas in the future, the impact of H₂S will no longer be an issue. The composition and delivery pressure of any proposed natural gas fuel will have to be considered as part of the relocation engineering package to ensure that any fuel nozzle modifications can be carried out in a timely manner.

Electrical Frequency and Dispatch Voltage; The units are currently designed to operate on the UK grid at 50 Hz. If possible, the units should be relocated to a country with a similar grid requirement so that the existing configuration can remain unchanged and the existing transformers can be reused.

Environmental Standards; The current water injected combustion system was designed to give 60ppmvd NO_x on gas fuel at base load. A new location with natural gas fuel may require different emissions standards, which may in turn require modifications to the water treatment plant and combustion system. This should be considered as part of the relocation engineering package.

Fire and Gas Protection System; The existing fire and gas protection system is comprehensive and is designed to protect the units and the entire site. Given that the new site will likely use only natural gas and that H₂S will not be present it is unlikely that a complex system such as the one currently at site will be needed. This should be considered as part of the relocation engineering package.

Enclosures; The units are currently housed in a large brick building which protects them from the impact of the local cold, damp marine climate. The building cannot be relocated but it is unlikely that a similar building and any of the cold weather protection measures, including heat tracing and insulation will be required as part of the new installation. This should be considered as part of the relocation engineering package.

None of these items should present a major problem for the relocation of the units provided that they are planned as part of the relocation.

2. DAILY LOG OF TTS ENGINEER, PATRICK BEGLEY

Tuesday, July 14

- Traveled Donegal / Dublin / Edinburgh / Dundee

Wednesday, July 15

- Traveled Dundee to Site. Worked at site. Took photo record of the plant and started review of operations and maintenance documentation.

Thursday, July 16

- Took video record of the plant and completed review of operations and maintenance documentation. Traveled Site/Edinburgh/London.

3. OBSERVATIONS ON MAJOR EQUIPMENT AND SYSTEMS

Gas Turbine Building

The two Frame 9 units are housed in a dedicated building separate from the main steam plant which existed before installation of these units. The building entirely encloses the two units and generally protects them from the impact of the local NW European maritime climate.



Photos 3.1 & 3.2: Gas Turbine Building Exterior

The building has a 38 ton overhead crane and has dedicated areas for MCCs, electrical control and electrical protection systems for each individual unit. There is a central control room where the Turbine Control Panel (TCP) and Generator Control Panel (GCP) for each unit are housed and from where operators are able to run the units locally.

Each Frame 9 unit is in turn enclosed within its own dedicated enclosure within the turbine building. The building and these enclosures have a central gas detection and fire protection system but otherwise each gas turbine unit is generally self-contained.

The units are configured for both gas and liquid fuel operation. The gas is from a local gas field and contains H_2S so the units have special detectors for this very hazardous component. There are liquid fuel storage tanks on site for the No.2 distillate. Gas is the primary fuel and distillate is the emergency backup. In total the units have run on gas for approximately 97% of their total run time.

The units have a water injection system for NO_x abatement. Each unit has its own manifolds and injection skids. There is a local demineralized water tank for water storage for both units and the demineralized water required for the system originates from the main plant RO system.

The building has a central fire system and a redundant set of water deluge fire pumps.

In general, the entire gas turbine building and units appear extremely clean and well maintained. However the building cannot be relocated and so the units will have to be covered by a new structure at the new site. Given that it is likely that a simpler building will be required and that natural gas or No. 2 distillate will most likely be used at the new location the complex fire protection and gas detection system presently in place may not

be required at all and can be replaced by a simpler system. This can be determined as part of the relocation engineering phase of the relocation project.

While it is not technically part of the gas turbine or associated systems, the 38 ton crane is a very useful piece of equipment at any plant. If possible, the crane should be included in any removal scope.

Cosmetically, the turbine and associated systems are in excellent condition with no major areas of corrosion or damage evident anywhere.

Gas Turbine-Generator

Both units have been well maintained and the most recent maintenance has been outlined elsewhere in this report. There are a number of refurbished capital parts available and these are listed in the attached Excel file (Attachment 1). While these parts represent some of the most commonly replaced parts on the unit, they do not represent a complete set of spares for the unit hot section. A complete recommended spare parts listing can be generated as part of a relocation engineering package.

The units are basically self-contained and have individual systems for the most part.



Photo 3.3: Frame 9 Unit Inside Building

The generator is of Brush manufacture and is rated at 150,625KVA. The GT 3 generator had been disassembled and repaired in 2003 following an oil leak but beyond that there is no record of recent testing. All equipment appears in good order.

Heaters are energized to protect the generator from moisture.

Controls and Instrumentation

The unit uses a Speedtronic™ Mark IV control system for all turbine controls and protection. Both unit control systems appeared to be in full operating condition and the control systems both showed a “Ready to Start” status at the time of inspection.



Photo 3.4: Speedtronic Mark IV Panel

The generator control is a Brush Electric MAVR with a GEC protection system. The system was powered and no alarms were displayed.



Photo 3.5: Generator Control Panel with MAVR.

In general all instruments appeared to be in good order and had calibration stickers.

The Motor Control Centers appeared to be intact and in good condition.

All pumps and motors appear to be intact and in good condition. The starting motor heater is on. No problems have been noted.

Water Injection System

Each unit has a dual manifold water injection system and its own local water delivery skid. There is also a local demineralized water storage tank. Everything appears to be intact and is available for relocation.

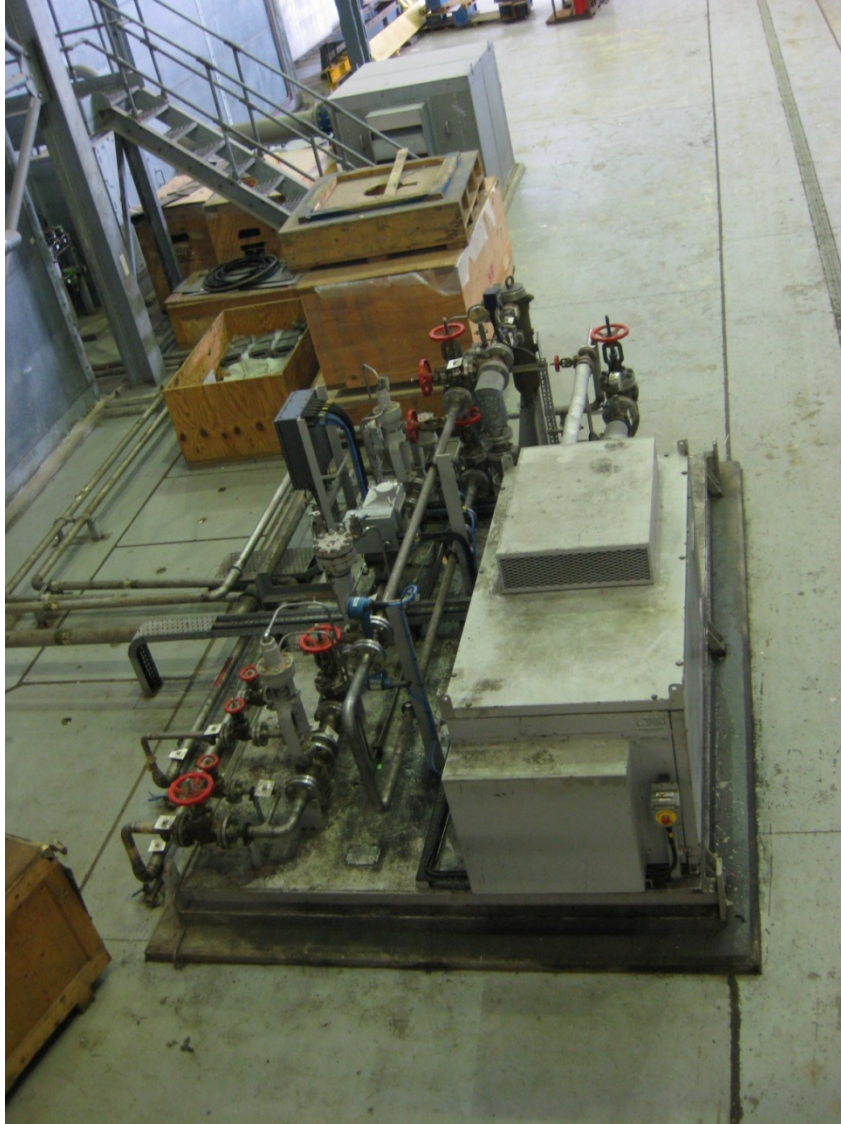


Photo 3.6: Unit Water Injection Skid

The water injection is used for NO_x abatement which may or may not be an issue at the new location of the units. This can be considered as part of the relocation engineering package.

If water injection is required then a suitably sized RO system will have to be identified and supplied as part of the relocation engineering process.

No. 2 Distillate Fuel System

A complete no. 2 distillate (liquid fuel) system is in place for each unit with common fuel tanks. The entire system is available for relocation. The system appears to be intact and operational.



Photo 3.7: No. 2 Distillate Fuel Tanks and Forwarding System

Gas Fuel System

A complete gas fuel system is in place for each unit. The system is available for relocation. The system appears to be intact and operational.

The system was originally designed for the gas coming from the local field. The composition of this gas was considerably different from that of standard natural gas. It is likely that the gas valve will be suitable for reapplication on natural gas but some modifications may have to be made to the fuel nozzles to accommodate the difference. This work can be undertaken as part of the relocation engineering package.

Cooling System

The unit cooling system is a water-based system with a bank of off-base fin fan coolers per unit. The system is available for relocation and appears to be intact and operational.



Photo 3.8: Fin Fan Cooling Skids (One Per Unit)

Fire and Gas Protection System

A comprehensive building and services fire protection system is in place. The system is available for relocation but given that the building is not being moved it may not be of value to relocate this system. The building requirement for the new location will likely be much less demanding and so there may be no need for a fire system of this complexity.

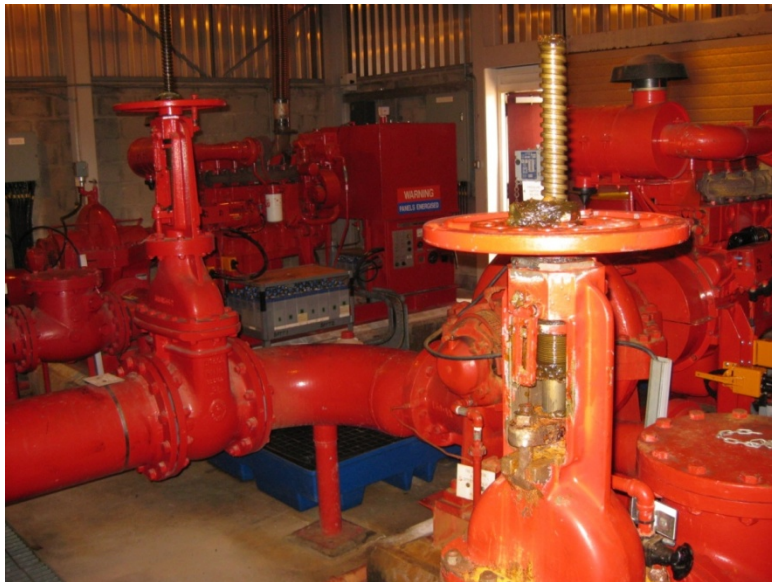


Photo 3.9: Redundant Fire Pumps and Diesels

A comprehensive gas detection and protection system is also in place. The system is available for relocation but given that the building is not being moved and that H₂S is unlikely to be present in the new gas supply, it may not be of value to relocate this system.

Each unit also has its own CO₂ fire protection system. The system appears to be intact and operational and should be relocated with the unit. Consideration should also be given to relocating only the part of the gas detection system directly associated with the gas turbines as part of the relocation engineering process.

Main Generator Step-up Transformer (GSU) and Auxiliary Transformer

The main GSU is a variable tap transformer manufactured by NI Transformers of Dundee, Scotland. Its nameplate high voltage range is from 163.3 kV (530.3 Amps) to 120.7 kV (717.5 Amps) for a generator output of 14 kV. Nominal high voltage rating is 142 kV. All equipment is in good order.

There is also a dedicated auxiliary transformer per unit which provides unit power.

Between each generator and the main GSU there is a generator isolation breaker.

All of this equipment appeared to be in good condition and provided that it is compatible with the electrical requirements at the new site, this equipment should be relocated along with the units



Photo 3.10: Main Generator Step Up (GSU) Transformer

Documentation

A review of the documentation currently available in the building control room confirmed that there is one complete set of unit manuals available on the units and it is likely that there are in fact several complete sets of documentation available.

There appears to have been good document archiving at site and it appears that all maintenance records, operators' logs, reports, etc., appear to be available and easily accessible.

Operational Test

An operational test was carried out on both units on 2nd September, 2009. A video record of the test was made but this record was not available during the visit. It is understood that this record is being retrieved and will be made available shortly.

In addition to the video record, a record of the unit load and fuel flow data was kept on the site central DCS system. This record shows that both units output more than 115 MW during this test. No additional information on unit parameters was retained by the DCS system.

4. CONCLUSIONS

In general, both units appear to be in very good condition and to have been well operated and maintained during their operational life. They continue to be actively maintained even though they are not in commercial operation any more to ensure that they remain in good condition.

Both units have undergone a reasonable number of starts since their last significant maintenance activity. Given this, it would be prudent to undertake a borescope inspection as part of any relocation process to provide additional assurance that the units are still in good condition and that they are likely to run for a further year without significant problems. If any preventative maintenance is indicated as a result of these inspections, it can be undertaken as part of the relocation process without impacting schedule.

Final relocation scope will of course be determined by the requirements of the new project but there does not appear to be any technical reason why these units cannot be successfully reapplied to a 50Hz grid.

Attachment 1(a)

COMBUSTION SYSTEM SPARES IN TURBINE HALL

FRAME 9E GAS TURBINE COMBUSTION SYSTEM SPARES IN TURBINE HALL

Description	Current Balance	Condition
1st Stage Nozzle	1	Reconditioned
1st Stage Nozzle Retaining Ring	1	Reconditioned
Combustion Liners	1 Set	Reconditioned
Transition Pieces	1 Set	Reconditioned
1st Stage Buckets	1 Set	Reconditioned
2nd Stage (?) Shroud Blocks	1 Set	New

Attachment 1(b)

GAS TURBINE SPARES IN STORES

FRAME 9E GAS TURBINE SPARES IN STORES

SSE Stock Code	Description	Long Description	Current Balance
67570011	PERMATEX LIQUID GASKET	NO 2C, ITEM NO 80011, 311 GRAMS TUBE. DRG PT NO 114A7412 P004. SECTION 502 - CONT ARR - ACC.SYS. GAS TURBINES ON BASE SPARES 5466/4	2
67570020	SS SPIRAL WOUND GASKET	3/16" THICK X 7 3/16" OD X 5 7/8" ID, FLEXITALLIC. NO 324A5325 P002 SECTION 511 - FUEL OIL STOP VALVE GAS TURBINES ON BASE SPARES 5469/20	2
67570038	F.N.TIP F9E	NO 207C3554 G007 "B", 08913, (EACH TIP HAS A SERIAL NUMBER) SECTION 512 - FUEL NOZZLE - DUAL FUEL GAS TURBINES ON BASE SPARES 5469/21	14
67570046	NOZZLE TIP	MARKED VC-46141, VYB 016. DRG PT NO 178C6619 P002 SECTION 512 - FUEL NOZZLE - DUAL FUEL GAS TURBINES ON BASE SPARES 5469/22	14
67570054	F.N.RING F7/9 TA 9538/(S/NOS)	DRG PT NO 196B1755 P002 SECTION 512 FUEL NOZZLE - DUAL FUEL GAS TURBINES ON BASE SPARES 5469/23	14
67570062	F.N.TRANSITION PIECE	DRG PT NO 196B1787 G006 SECTION 512 FUEL NOZZLE - DUAL FUEL GAS TURBINES ON BASE SPARES 5470/24	14
67570070	COPPER GASKET M9579-0171	1 9/16"OD X 1 5/16"ID X 1/16" THICK.(FOR C.C.67.57.0062). SECTION 512 FUEL NOZZLE - DUAL FUEL GAS TURBINES ON BASE SPARES 5470/24A	14
67570089	F.N.LOCK PLATE 287A1683 P001	1/16" THICK S.ST, 4 5/8"OD X 4 1/4"ID, DISHED. SECTION 512 FUEL NOZZLE - DUAL FUEL GAS TURBINES ON BASE SPARES 5470/25	16
67570097	GASKET NO 302A1503 P001	1/16" THICK VITON. 2 3/4"OD X 1 3/4"ID, 4 HOLES 1/4"DIA ON 2 3/4"PCD. SECTION 507 - HYD TRIP RELAY L.P. GAS TURBINES ON BASE SPARES 5467/10	4
67570100	GASKET NO 239B9051 P002	SECTION 502 - CONTROL ARRANGEMENTS - ACC. SYSTEMS GAS TURBINES ON BASE SPARES 5466/1	2
67570119	GASKET NO 318A9450 P001	1/16" THICK CAF OR EQUIV. 14 1/2"OD, 9"ID, 6 - 13" HOLES ON 13" PCD. SECTION 502 - CONTROL ARRANGEMENTS - ACC SYSTEMS GAS TURBINES ON BASE SPARES 5466/2	2
67570127	GASKET NO 318A9704 P001	1/16" THICK CAF OR EQUIV. 14 1/16 SQ - HOLE TO SUIT. SECTION 502 - CONTROL ARRANGEMENTS - ACC SYSTEMS GAS TURBINES ON BASE SPARES 5466/3	2
67570135	GASKET NO 318A9732 P001	1/16" THICK OR EQUIV. SECTION 507 - HYD TRIP RELAY LP GAS TURBINES ON BASE SPARES 5467/11	4
67570143	FILTER ELEMENT NO HC9020FUT4H	FOR PALL FILTER ASSEMBLY TYPE HH 9020 SRS SECTION 0500 - CONTROL ARRANGEMENTS & ASSEMBLIES GAS TURBINES CONTROL V/V HYDRAULIC FILTERS 5646/1	2

FRAME 9E GAS TURBINE SPARES IN STORES

67570151	SEAL KIT FOR PALL FILTER ASSY	TYPES HH9020 SRS & HH9021 A12 UTRWP, NO H9020 SKZ. SECTION 0500 - CONTROL ARRANGEMENTS & ASSEMBLIES GAS TURBINES CONTROL V/V HYDRAULIC FILTERS 5646/2 & 4	8
67570160	FILTER ELEMENT NO HC9021FDT4H	FOR PALL FILTER ASSEMBLY TYPE HC9021 A12 UTRWP SECTION 0500 - CONTROL ARRANGEMENTS & ASSEMBLIES GAS TURBINES CONTROL V/V HYDRAULIC FILTERS 5646/3	2
67570305	GASKET NO 318A9713 P037	SPIRAL WOUND, 24 3/8" X 23 9/32" X 3/16" THICK SECTION 701 - COMBUSTION CHAMBER GAS TURBINES ON BASE SPARES 5474/1	14
67570313	3/4" UNC X 3" LONG BOLT	A150, ALLOY STEEL, TWELVE POINT HEAD, NO N733AP35048 C23. SECTION 701 - COMBUSTION CHAMBER GAS TURBINES ON BASE SPARES 5474/2	39
67570330	3/4" UNC X 2 1/2" LONG BOLT	ALLOY STEEL, 12 POINT HEAD, NO N733AP35040 SECTION 701 - COMBUSTION CHAMBER GAS TURBINES ON BASE SPARES 5474/4	15
67570348	GASKET NO 324A9243 P003	HIGH TEMPERATURE SECTION 701 - COMBUSTION CHAMBER GAS TURBINES ON BASE SPARES 5474/5	2
67570356	GASKET NO 324A9109 P124	HIGH TEMPERATURE SECTION 701 - COMBUSTION CHAMBER GAS TURBINES ON BASE SPARES 5474/6	2
67570364	1/2" UNC X 1 1/2" LONG BOLT	ALLOY STEEL, TWELVE POINT HEAD, NO N733AP29024 C23. SECTION 701 - COMBUSTION CHAMBER GAS TURBINES ON BASE SPARES 5475/7	3
67570402	T/PIECE SEAL A199 SS ASSY	NO 197C3121 G001. SECTION 717 - TRANSITION PIECE GAS TURBINES ON BASE SPARES 5475/8&9	14
67570410	5/8" UNC X 1 1/2" LONG BOLT	HEX HEAD, ALLOY STEEL, NO 186C1916 P022. SECTION 717 - TRANSITION PIECE GAS TURBINES ON BASE SPARES 5475/10	28
67570429	SS LOCKING PLATE FOR 5/8" BOLT	A199, NO 219B6763 P001. SECTION 717 - TRANSITION PIECE GAS TURBINES ON BASE SPARES 5475/11	28
67570437	1/2" UNC X 1 1/2" LONG BOLT	HEX HEAD, A199, ALLOY STEEL, NO 186C1916 P014. SECTION 717 - TRANSITION PIECE GAS TURBINES ON BASE SPARES 5475/12	56
67570445	SS LOCKING PLATE FOR 1/2" BOLT	NO 219B6764 P001. SECTION 717 - TRANSITION PIECE GAS TURBINES ON BASE SPARES 5475/13	28
67570453	5/8" UNC X 3 1/4" LONG BOLT	HEX HEAD, ALLOY STEEL, NO 186C1916 P049. SECTION 717 - TRANSITION PIECE GAS TURBINES ON BASE SPARES 5476/14	14
67570461	SPECIAL LOCKING PLATE	FOR 5/8" BOLT, NO 219B6763 P005. SECTION 717 - TRANSITION PIECE GAS TURBINES ON BASE SPARES 5476/15	28
67570470	RETAINER SEAL VC 49171	NO 237B2743 G002. SECTION 717 - TRANSITION PIECE GAS TURBINES ON BASE SPARES 5476/16	14

FRAME 9E GAS TURBINE SPARES IN STORES

67570607	CARTRIDGE FILTER - 0.5 MICRON	PALL REF HC 9601FUP11YGE RH 31C-1, NO OS8488 P002. SECTION 908 - HYDRAULIC SUPPLY FILTER GAS TURBINES ON BASE SPARES 5477/1	20
67570615	SPIRALWOUND GASKET 3-150 316L	FLEXITE (FLEXITALLIC), NO 302A4594 P009. SECTION 909 - PIPING SLG & CLG GAS TURBINES ON BASE SPARES 5477/2	6
67570623	SPIRALWOUND GASKET A261 3"/600	316L FLEXITE (FLEXITALLIC), NO 302A4594 P065. SECTION 909 - PIPING SLG & CLG GAS TURBINES ON BASE SPARES 5485/51 & 5477/3	13
67570631	SPIRALWOUND GASKET A217 8-150	316L FLEXITE (FLEXITALLIC), 3/16" THICK, 1/8" SPACER, NO 302A4594 P015 SECTION 909 - PIPING SLG & CLG GAS TURBINES ON BASE SPARES 5477/4	5
67570640	SPIRALWOUND GASKET F9 12-150	316L FLEXITE (FLEXITALLIC), 3/16" THICK, 1/8" SPACER, NO 302A4594 P017 SECTION 909 - PIPING SLG & CLG GAS TURBINES ON BASE SPARES 5477/5	4
67570658	1/2" OD X 1/2"NPT MALE STUD	SWAGELOK 316 CIV, NO 156A1075 P015. FOR TUBE CONNECTION SECTION 909 - PIPING SLG & CLG GAS TURBINES ON BASE SPARES 5479/13	2
67570666	1/2" X 1/2" OD PARALLEL UNION	SWAGELOK 316 DHL, NO 156A1076 P007. SECTION 909 - PIPING SLG & CLG GAS TURBINES ON BASE SPARES 5479/14	2
67570674	90 DEG UNION FEMALE ELBOW	FOR 1/2" X 1/2" OD TUBE, SWAGELOK 316 BNV, NO 156A1078 P018. SECTION 909 - PIPING SLG & CLG GAS TURBINES ON BASE SPARES 5479/15	2
67570682	LOCKING PLATE FOR 7/8" BOLT	NO 294A150 P030. SECTION 909 - PIPING SLG & CLG GAS TURBINES ON BASE SPARES 5479/16	4
67570690	LOCKING PLATE FOR 3/4" BOLT	4" X 1 1/2" X 1/16" THICK, NO 294A150 P006. SECTION 909 - PIPING SLG & CLG GAS TURBINES ON BASE SPARES 5485/50 & 5479/17	16
67570755	SPIRALWOUND GASKET 1 1/2"- 150	316L FLEXITE (FLEXITALLIC), NO 302A4594 P006 SECTION 916 - STARTING MEANS PIPEWORK GAS TURBINES ON BASE SPARES 5481/25	2
67570763	SPIRALWOUND GASKET F9	FLEXITALLIC, NO 318A9701 P004. SECTION 962 - FUEL GAS PIPING GAS TURBINE ON BASE SPARES 5484/40	20
67570780	SPIRALWOUND GASKET	FLEXITE, NO 302A4594 P036. SECTION 965 - ATOMISING AIR PIPEWORK GAS TURBINES ON BASE SPARES 5485/48	6
67571000	0.5" FILTER TUBE TYPE TR 300	NO SP0922005 P003. SECTION 1015 - GAS PURGE CONTROLLED AIR GAS TURBINES ON BASE SPARES 5487/1	10
67571018	LUBRICATING OIL FILTER PL718-6	5 MICRON, CARLSON FILTRATION, NO 114A3786 P003. SECTION 1053 - MAIN L.O.CARTRIDGE GAS TURBINES ON BASE SPARES 5488/4	105

FRAME 9E GAS TURBINE SPARES IN STORES

67571026	FUEL OIL FILTER PL718-6N	5 MICRON, CARLSON FILTRATION, NO 114A3786 P021. SECTION 1075 - MAIN F.O.CARTRIDGE GAS TURBINES ON BASE SPARES 5488/5	156
67571034	ULTRAVIOLET FLAME DETECTOR	NO LG 1093 AA 04, SERIES 1, HONEYWELL, NO 261A1812 P010 SECTION 1121 - FLAME DETECTOR GAS TURBINES ON BASE SPARES 5488/7	2
67571506	IGNITION TRANSFORMER	PT NO A16257P001 (GE), 60 HZ, 115V, VA450, S+/-C.V 15000, SEC. MILLIAMP 25. DRG PT NO 9650105 P006. SECTION 1213 - IGNITION SYSTEM GAS TURBINES ON BASE SPARES 5489/1	2
67571514	SPARK PLUG LEAD	DRG PT NO 354A1513P132 (supercedes 311A5802 P003) SECTION 1213 - IGNITION SYSTEM GAS TURBINES ON BASE SPARES 5489/2	1
67571522	SPARK PLUG POSITIONING SPRING	ASSY. CHAMPION REF VC 5146. DRG PT NO 143D7487 G001. SECTION 1214 - SPARK PLUG POSITIONING SPRING ASSY GAS TURBINES ON BASE SPARES 5489/3	2
67571530	S.P.INSULATOR	(CHAMPION). DRG PT NO 287A1699 P001. SECTION 1214 - SPARK PLUG POSITIONG SPRING ASSY GAS TURBINES ON BASE SPARES 5489/4	5
67571549	S.P.TERMINAL F9	(CHAMPION). DRG PT NO 219B6771 G001. SECTION 1214 - SPARK PLUG POSITIONING SPRING ASSY GAS TURBINES ON BASE SPARES 5490/5	4
67571557	GASKET A52	(CHAMPION). DRG PT NO 184A8731 P001. SECTION 1214 - SPARK PLUG POSITIONING SPRING ASSY GAS TURBINES ON BASE SPARES 5490/6	6
67571565	S.P.CORE F7/9	REF 41007 67, OAF L4. (CHAMPION). DRG PT NO 298A8224 P001. SECTION 1214 - SPARK PLUG POSITIONING SPRING ASSY GAS TURBINES ON BASE SPARES 5490/7	3
67571573	S.P.WASHER	(CHAMPION). DRG PT NO 298A8216 P001. SECTION 1214 - SPARK PLUG POSITIONING SPRING ASSY GAS TURBINES ON BASE SPARES 5490/8	8
67571581	S.P.WASHER	(CHAMPION). DRG PT NO 298A8222 P001. SECTION 1214 - SPARK PLUG POSITIONING SPRING ASSY GAS TURBINES ON BASE SPARES 5490/9	2
67571590	NOX WATER INJECTION PIPING FLEX METAL HOSE	PT NO 329A7241P017	11
		FOR PIPING - NOX WATER INJECTION	
		FOR GAS TURBINE - ON BASE SPARES	
67571603	COMPRESSOR WATER WASH FLEX HOSE - TEFLON/METAL	PT NO 328A6600P006	1
		FOR PIPING - COMPRESSOR WATER WASH	
		FOR GAS TURBINE - ON BASE SPARES	
67572499	STUD COUPLING	**PLEASE NOTE THAT THESE STUDS SHOULD BE OBTAINED AS BALANCED PAIRS**	5

FRAME 9E GAS TURBINE SPARES IN STORES

		TO DRAWING 295A9697TP, NO 186C1427 P001 SECTION 1309 - HARDWARE, LOAD COUPLING GAS TURBINES ON BASE SPARES - ROTATING PARTS 5666/1	
67572502	SELF LOCKING NUT	TO DRAWING 295A9697 TP, NO 307A9247 P005. SECTION 1309 - HARDWARE, LOAD COUPLING GAS TURBINES ON BASE SPARES - ROTATING PARTS 5666/2	10
67572510	ROTOR STUD PLUG	TO DRAWING 295A9697 TP, NO 298A8502 P001. SECTION 1309 - HARDWARE, LOAD COUPLING GAS TURBINES ON BASE SPARES - ROTATING PARTS 5666/3	5
67573002	INLET GUIDE VANE - GEAR	GAS TURBINE ON BASE SPARES - IGV ACTUATOR	64
67573010	INLET GUIDE VANE - SPRING WASHER	GAS TURBINE ON BASE SPARES - IGV ACTUATOR	127
67573029	INLET GUIDE VANE - THRUST WASHER	GAS TURBINE ON BASE SPARES - IGV ACTUATOR	114
67573037	INLET GUIDE VANE - BLADE	GAS TURBINE ON BASE SPARES - IGV ACTUATOR	4
67573045	INLET GUIDE VANE - BUSH	GAS TURBINE ON BASE SPARES - IGV ACTUATOR	63
67573738	X/F TUBE-A237	DRG PT NO 156D2096 G001. FOR FRAME 9E GAS TURBINES NO 5170 & 5171, SERIAL NOS 295596 & 7. GAS TURBINES COMBUSTION & SPEEDTRONIC SPARES 5667/4	14
67573932	GASKET	PT NO 302A4594 FOR FRAME 9E GAS TURBINES NOS 5170 & 5171, SERIAL NO 295596 & 7 GAS TURBINES COMBUSTION & SPEEDTRONIC SPARES 5669/24	3
67573967	GASKET	PT NO 302A4594P031 FOR FRAME 9E GAS TURBINES NOS 5170 & 5171, SERIAL NO 295596 & 7 GAS TURBINES COMBUSTION & SPEEDTRONIC SPARES 5669/27	8
67573983	GASKET	PT NO 302A4594P061 FOR FRAME 9E GAS TURBINES NOS 5170 & 5171, SERIAL NO 295596 & 7 GAS TURBINES COMBUSTION & SPEEDTRONIC SPARES 5669/29	60
67574009	GASKET	F9 (14), PT NO 314A5326P001 FOR FRAME 9E GAS TURBINES NOS 5170 & 5171, SERIAL NO 295596 & 7 GAS TURBINES COMBUSTION & SPEEDTRONIC SPARES 5669/31	45
59223006	NEEDLE VALVE AM1P 128	DRG PT NO 185A1356 P001 SECTION 502 - CONT ARR - ACC SYS. GAS TURBINES ON BASE SPARES 5466/6	1
34350209	MICRO SWITCH,EX-AR 471-3,9051	NO 298A530 P007. HONEYWELL. SECTION 503 - OVERSPEED TRIP H.P. GAS TURBINES ON BASE SPARES 5467/9	2
34350217	LINEAR POSITION TRANSDUCER	KAVLICO REF: GM7678C, DRG 99-28, S/NO 1045. DRG PT NO 311A5178 P021. SECTION 507 - HYD TRIP RELAY L.P. GAS TURBINES ON BASE SPARES 5468/13	1

FRAME 9E GAS TURBINE SPARES IN STORES

34350225	LINEAR TRANSDUCER	KAVILCO DRG GM 7581 D, SERIAL NO 1106. NO 311A5178 P019 SECTION 509 - CONTROL VALVE GAS TURBINES ON BASE SPARES 5468/17	1
34350241	MAGNETIC PICKUP 1-0249 90M	AIRPAX ELECTRONICS, NO 185A1117 P012. SECTION 546 - MAGNETIC PICKUP GAS TURBINES ON BASE SPARES 5470/29	1
34350250	TRANSDUCER 277A2910 P010	ROSEMOUNT MODEL 1151GE7K72B2. S/N 1359326. OUTPUT 0-5V DC. MAX WP 300 PSIG. CAL. 0-200 PSIG. CUSTOMER RELEASE: A88G031304. SECTION 557 - TRANSDUCER UNIT GAS TURBINES ON BASE SPARES 5471/34	1
34350268	TRANSDUCER 277A2910 P013	ROSEMOUNT MODEL 1151GE7K72B2. S/NO 1264072. OUTPUT 0-5V DC. MAX WP 300 PSIG. CAL 0-200 PSIG. CUSTOMER RELEASE: A88G012943 SECTION 557 - TRANSDUCER UNIT GAS TURBINES ON BASE SPARES 5471/35	2
59326000	ELECT-HYDRAULIC VALVE	MOOG MODEL NO 771K208, SERIAL 323. DRG PT NO 312A6077 P007. SECTION 533 - SERVO BYPASS VALVE GAS TURBINES ON BASE SPARES 5470/26	1
59326018	SERVOVALVE - MOOG NO 771K200	SERIAL 1616, CAGE CODE 0CHW0. DRG PT NO 312A6077 P001 SECTION 541 STOP & CONTROL VALVE - GAS GAS TURBINES ON BASE SPARES 5470/28	1
34350012	THERMOCOUPLE KTE SS 321	NO 302A4010 P002 SECTION 623 - EXH. CONTROL THERMOCOUPLES GAS TURBINES ON BASE SPARES 5472/1	15
34350020	THERMOCOUPLE KTE SE A14017 P1	NO A14017 P001 NOS 25 TO 28 SECTION 637 - REMOVEABLE THERMOCOUPLES GAS TURBINES ON BASE SPARES 5472/2	4
34350039	THERMOCOUPLE KTE SE A14017 P2	NO A14017 P002 NOS 29 TO 32 SECTION 637 - REMOVEABLE THERMOCOUPLES GAS TURBINES ON BASE SPARES 5472/3	4
34350047	THERMOCOUPLE TYPE K, EXTD NO 351A3488P005	(SUPERSEDES DWG 275A8898P007)	2
		REMOVEABLE THERMOCOUPLES GAS TURBINES ON BASE SPARES 5472/4	
34350055	THERMOCOUPLE KTE SE A14017 P4	NO A14017 P004 NOS 35 & 36 SECTION 637 - REMOVEABLE THERMOCOUPLES GAS TURBINES ON BASE SPARES 5472/5	2
34350063	THERMOCOUPLE KTE 275A8898 P7	NO 275A8898 P007 NOS C29 TO C31 SECTION 637 - REMOVEABLE THERMOCOUPLES GAS TURBINES ON BASE SPARES 5473/6	3
34350071	THERMOCOUPLE KTP SE A14028 P1	POCKET NPI 316. NO A14028 P001 NOS 5 & 6 SECTION 637 - REMOVEABLE THERMOCOUPLES GAS TURBINES ON BASE SPARES 5473/7	1
34350080	THERMOCOUPLE, TYPE K, EXTD. (FOR NO 2 BRG. METAL)	NO 351A3488P040	1

FRAME 9E GAS TURBINE SPARES IN STORES

		REMOVEABLE THERMOCOUPLES - GAS TURBINES ON BASE SPARES	
34350098	THERMOCOUPLE, TYPE K, EXTD. (FOR NO 2 BRG. METAL)	NO 351A3488P041	1
		REMOVEABLE THERMOCOUPLES - GAS TURBINES ON BASE SPARES	
59106506	QUICK ACTING GLOBE VALVE	DRAGON V/V NO 80053 V. JOHN BROWN NO 318A9758 P011. SECTION 910 - FUEL OIL PIPING GAS TURBINES ON BASE SPARES 5479/18	1
34350306	MAGNETIC PICK-UP MODEL 1-0245	90C. AIRPAX ELECTRONICS DRG 085-101-0245. DRG PT NO 185A1117 P008. SECTION 910 - FUEL OIL PIPING GAS TURBINES ON BASE SPARES 5479/19	1
34350314	PRESSURE SWITCH 611 GEA2	1Q90 (CUSTOM CONTROL SENSORS).PROOF PRESS 1000 PSIG. DRG PT NO 275A8833 P003. SECTION 910 - FUEL OIL PIPING GAS TURBINES ON BASE SPARES 5480/20	1
34350322	PRESSURE SWITCH 646 GEAM 610	(CUSTOM CONTROL). PRESS. SW, PROOF 4500 PSIG, INC. ADJ RANGE 160-350 PSIG. DRG PT NO 226A1706 P209. SECTION 911 - FUEL GAS PIPING GAS TURBINES ON BASE SPARES 5480/24	1
34350330	PRESSURE SWITCH 646 GEM 615	PRESS SW (CUSTOM CONTROL SENSORS). PROOF 4500 PSIG, INCR 20+/-2 PSIG, DECR 6+/-1 PSIG. DRG PT NO 226A1706 P029. SECTION 926 - GAUGE CABINET GAS TURBINES ON BASE SPARES 5482/34	1
34350349	PRESSURE SWITCH 646 PE 607	PRESS SW (CUSTOM CONTROL SENSORS). PROOF 4500 PSIG, INCR 1470 +/- 25 PSIG. DRG PT NO 226A1706 P028. SECTION 926 - GAUGE CABINET GAS TURBINES ON BASE SPARES 5483/35	1
34350357	PRESSURE SWITCH 646 GEA 2	(CUSTOM CONTROL SENSORS), PROOF 4500 PSIG, INC ADJ 6/75 PSIG. DRG PT NO 226A1706 P101. SECTION 926 - GAUGE CABINET GAS TURBINES ON BASE SPARES 5483/36	1
34350373	PRESSURE SWITCH 646 DZE 2	(CUSTOM CONTROL SENSORS), DIFFERENTIAL TYPE, 750 PSIG PROOF PRESS, INCR ADJ 6/75 PSID. DRG PT NO 286A6062 P002. SECTION 926 - GAUGE CABINET GAS TURBINES ON BASE SPARES 5483/38	1
34350381	THERMOSWITCH C/N 80016-5	TEMP. RANGE: -100 TO +600 DEG F (FENWELL). DRG PT NO 239A5772 P003. SECTION 983 - ATOMISING AIR - TURBINE GAS TURBINES ON BASE SPARES 5486/54	1
59284501	SOLENOID VALVE 1/4"NB	ASCO CAT NO HCX 8262135 V 13893. SERIAL NO A21192A. 125V DC. REBUILD KIT: 312725-V, SOL: HC 80143. DRG PT NO 324A5700 P001. SECTION 911 - FUEL GAS PIPING GAS TURBINES ON BASE SPARES 5480/23	1

FRAME 9E GAS TURBINE SPARES IN STORES

59284510	SOLENOID VALVE SIZE 3/8" 200PS	ASCO CAT NO 2126304 F. SERIAL: FFP 39965. 125V DC, 35.1W, 200 PSIG, REBUILD KIT 212785. DRG PT NO 917B495 P003. SECTION 918 - FUEL NOZZLE PURGE PIPEWORK GAS TURBINES ON BASE SPARES 5481/26	1
59284528	SOLENOID VALVE SIZE 3/8" 75PS	ASCO CAT NO EP831540 F. SERIAL: F13260A. 125V DC, 35.1W, 75 PSIG. REBUILD KIT : 306731 F. DRG PT NO 258A4728 P001. SECTION 918 - FUEL NOZZLE PURGE PIPEWORK GAS TURBINES ON BASE SPARES 5481/27	1
59172002	6" CHECK VALVE C/N 1603-A	(DANIEL IND). SERIAL NO 90-500586, REF 216-31-979, RATING ANS 300. DRG PT NO 268A1901 P020. SECTION 922 - ATOMISING AIR PIPEWORK GAS TURBINES ON BASE SPARES 5481/29	1
59172010	CHECK VALVE MODEL F3 C5G 815	(VICKERS). DRG PT NO 185A1526 P003. SECTION 947 - HYDRAULIC MANIFOLD GAS TURBINES ON BASE SPARES 5482/31	1
59106514	1/4" GLOBE VALVE 2000 PSIG	DRAGON V/V NO 15857-HF. JOHN BROWN NO 318A9758 P003. SECTION 926 - GAUGE CABINET GAS TURBINES ON BASE SPARES 5482/30	1
59253606	1/4" RELIEF VALVE	MODEL NO R2V 12-333-10-A5, 016-19228-0 (HAGGLUNDS). NO 185A1525 P005. SECTION 947 - HYDRAULIC MANIFOLD GAS TURBINES ON BASE SPARES 5482/32	1
59326026	AIR BLEED VALVE MODEL AB04-A5	(ABEX). DRG PT NO 185A1527 P001. SECTION 947 - HYDRAULIC MANIFOLD GAS TURBINES ON BASE SPARES 5482/33	1
59284536	SOLENOID VALVE 3/4" FIG 533	SERIAL NO K89709, PRESS 160 PSIG, 110V DC. (RUGGLES-KLINGEMANN). DRG PT NO 114A8218 P034. SECTION 1019 - VALVE SOLENOID GAS TURBINES ON BASE SPARES 5487/2	1
59304200	PLUG VALVE MANUAL TRIP	REPUBLIC MANF REF: 742-1 1/4 DZ."TELEDYNE". DRG PT NO 114A3958 P001. SECTION 1021 - PLUG VALVE GAS TURBINES ON BASE SPARES 5487/3	1

Attachment 1(c)

OFF BASE GAS TURBINE SPARES

FRAME 9E OFF BASE GAS TURBINE SPARES

SSE Stock Code	Description	Long Description	Current Balance
67573509	TILTING PAD SET	FOR 400 OD X 240 LONG JOURNAL BEARING (5 PADS PER JOURNAL). GLACIER TYPE AOGB/9090. BRUSH PT NO 9262092/63. DRGS AO 3140828 & 9, REF 08. FOR A.C.GENERATOR FRAME BDAX 9-450 PRH, MACHINE NOS 37694A-1G & 2G. GAS TURBINES SET INCLUDES ITEMS 1,2 & 3 OF ISR OFF BASE SPARES- MEDIUM VOLTAGE SYSTEM 5680/1	1
67573517	SHAFT SEAL RING 3135218/01	C/W GARTER SPRING FOR A.C.GENERATOR FRAME BDAX 9-450 PRH, MACHINE NOS 37694A-1G & 2G. GAS TURBINES OFF BASE SPARES - MEDIUM VOLTAGE SYSTEM 5680/2	10
67573541	SHAFT SEAL RING TENSION SPRING	BRUSH NO E3125140/04, DRG NO AO 3140828 REF 07 FOR A.C.GENERATOR FRAME BDAX 9-450 PRH, MACHINE NOS 37694A-1G & 2G. GAS TURBINES OFF BASE SPARES - MEDIUM VOLTAGE SYSTEM 5681/5	5
67573614	FILTER CARTRIDGE NO D6359325	FOR VOKES DUPLEX FILTER UNIT TYPE E238L, NO E6359917 FOR OIL SYSTEM, BRUSH DRG B3140603. GAS TURBINES OFF BASE SPARES - MEDIUM VOLTAGE SYSTEM 5601/23	2
34365303	PRESSURE GAUGE 0 TO 70 BAR	BADOTHERM, MODEL MGS 18/3A, 1/2" NTP, 4" DIAL FOR NOX CONTROL WATER INJECTION SKID FOR GAS TURBINE - OFF-BASE SPARES - EXH. GAS SYSTEM 5492/5	1
75350912	DISPOSABLE CARTRIDGE ELEMENT	5 MICRON TYPE TXW5A-GDL10 NO BFAH/ITEM 10 FOR 2" SAE SIMPLEX FILTER TYPE IBGAH-F2-300 SERIAL NOS 90728-1A & 1B FOR GAS TURBINE - OFF-BASE SPARES - EXHAUST SYSTEM 5492/7	2

FRAME 9E OFF BASE GAS TURBINE SPARES

53521005	TYPE 2112 PICK OFF COIL	FOR KDG FLOWMETER TYPE 7246 FOR GAS TURBINE - OFF-BASE SPARES - EXH. GAS SYSTEMS 5493/10	1
53521013	TYPE 918/T PRE-AMP PCB	FOR KDG FLOWMETER TYPE 7246 FOR GAS TURBINE - OFF-BASE SPARES - EXH. GAS SYSTEMS 5493/11	1
59810858	SPRING	FOR KEYSTONE/YARWAY TYPE 5116 AUTO-RECIRC. VALVE SIZE 1 1/2" X 1 1/2" X 3/4", BODY TRIM S/S, FLANGED 4504 FOR NOX CONTROL WATER INJECTION SKID FOR GAS TURBINE - OFF-BASE SPARES - EXH. GAS SYSTEMS 5494/16	1
59810866	O-RING	FOR KEYSTONE/YARWAY TYPE 5116 AUTO-RECIRC. VALVE SIZE 1 1/2" X 1 1/2" X 3/4", BODY TRIM S/S, FLANGED 4504 FOR NOX CONTROL WATER INJECTION SKID FOR GAS TURBINE - OFF-BASE SPARES - EXH. GAS SYSTEMS 5494/17	1
63461609	P2-23 BALL BEARING NO 21-026	FOR KINDER JANES SUNFLO PUMP SERIES P-2000, MODEL FMP-2MES, 12300 RPM, 19.3M3/HR AT 36 BAR G FOR GAS TURBINE - NOX CONTROL WATER INJECTION SKID 5495/23	1
63461617	P2-77 SEAL ASSEMBLY	(1 1/8" SHAFT) NO SE04UT01UA2 FOR KINDER JANES SUNFLO PUMP SERIES P-2000, MODEL FMP-2MES, 12300 RPM, 19.3M3/HR AT 36 BAR G FOR GAS TURBINE - NOX CONTROL WATER INJECTION SKID 5496/24	1
63461625	P2-58 O-RING NO 14-052UA	FOR KINDER JANES SUNFLO PUMP SERIES P-2000, MODEL FMP-2MES, 12300 RPM, 19.3M3/HR AT 36 BAR G FOR GAS TURBINE - NOX CONTROL WATER INJECTION SKID 5496/25	1
63461633	P2-20 O-RING NO 14-054UA	FOR KINDER JANES SUNFLO PUMP SERIES P-2000, MODEL FMP-2MES, 12300 RPM, 19.3M3/HR AT 36 BAR G FOR GAS TURBINE - NOX CONTROL WATER INJECTION SKID 5496/26	1

FRAME 9E OFF BASE GAS TURBINE SPARES

63461641	P2-20 O-RING NO 14-061UA	FOR KINDER JANES SUNFLO PUMP SERIES P-2000, MODEL FMP-2MES, 12300 RPM, 19.3M3/HR AT 36 BAR G FOR GAS TURBINE - NOX CONTROL WATER INJECTION SKID 5496/27	1
63461650	P2-28 O-RING NO 14-069UA	PT NO 14-069UA FOR KINDER JANES SUNFLO PUMP SERIES P-2000, MODEL FMP-2MES, 12300 RPM, 19.3M3/HR AT 36 BAR G FOR GAS TURBINE - NOX CONTROL WATER INJECTION SKID 5496/28	1
63461668	P2-117 O-RING NO 14-161UA	FOR KINDER JANES SUNFLO PUMP SERIES P-2000, MODEL FMP-2MES, 12300 RPM, 19.3M3/HR AT 36 BAR G FOR GAS TURBINE - NOX CONTROL WATER INJECTION SKID 5496/29	1
63461676	P2-95 BALL BEARING NO 21-033	FOR KINDER JANES SUNFLO PUMP SERIES P-2000, MODEL FMP-2MES, 12300 RPM, 19.3M3/HR AT 36 BAR G FOR GAS TURBINE - NOX CONTROL WATER INJECTION SKID 5496/30	2
63461684	P2-7 SHROUD GASKET NO SK01UT01	FOR KINDER JANES SUNFLO PUMP SERIES P-2000, MODEL FMP-2MES, 12300 RPM, 19.3M3/HR AT 36 BAR G FOR GAS TURBINE - NOX CONTROL WATER INJECTION SKID 5496/31	1
63461692	P2-121 GEARBOX GASKET	NO GK01UT03 FOR KINDER JANES SUNFLO PUMP SERIES P-2000, MODEL FMP-2MES, 12300 RPM, 19.3M3/HR AT 36 BAR G FOR GAS TURBINE - NOX CONTROL WATER INJECTION SKID 5496/32	1
63461706	P2-121 SEAL RING	(1 1/8 SHAFT) NO SE04UT01UC1 FOR KINDER JANES SUNFLO PUMP SERIES P-2000, MODEL FMP-2MES, 12300 RPM, 19.3M3/HR AT 36 BAR G FOR GAS TURBINE - NOX CONTROL WATER INJECTION SKID 5496/33	1

FRAME 9E OFF BASE GAS TURBINE SPARES

63461714	P2-25 MATING RING	NO RJ09UT01RJ FOR KINDER JANES SUNFLO PUMP SERIES P-2000, MODEL FMP-2MES, 12300 RPM, 19.3M3/HR AT 36 BAR G FOR GAS TURBINE - NOX CONTROL WATER INJECTION SKID 5497/34	1
63461722	P2-37 BALL BEARING NO 21-027	FOR KINDER JANES SUNFLO PUMP SERIES P-2000, MODEL FMP-2MES, 12300 RPM, 19.3M3/HR AT 36 BAR G FOR GAS TURBINE - NOX CONTROL WATER INJECTION SKID 5497/35	1
63461730	MATING RING P2-158	PT NO RJ09UT01RJ FOR SUNFLO PUMP SERIES P-2000, MODEL FMP-2MES FOR NOX CONTROL WATER INJECTION SKID FOR GAS TURBINE - OFF-BASE SPARES - EXH. GAS SYSTEM 5497/36	1
63461749	P2-9 HIGH SPEED SHAFT ASSY	FOR KINDER JANES SUNFLO PUMP SERIES P-2000, MODEL FMP-2MES, 12300 RPM, 19.3/M3 AT 36 BAR G GAS TURBINES - NOX CONTROL WATER INJECTION PUMP 5499/47	1
75350947	2MM SS STRAINER ELEMENT	FOR HINDLE S.S. VALVE, FLANGED TO DN80 PN16, NO C65153 FOR GAS TURBINE - OFF-BASE SPARES - EXH. GAS SYSTEMS 5497/37	1
59631007	SPARES KIT	FOR KDG MAXSEAL SOLENOID VALVE TYPE 581. V/V SERIAL NOS SD35938 TO 35941 FOR NOX CONTROL WATER INJECTION SKID FOR GAS TURBINE - OFF-BASE SPARES - EXH. GAS SYSTEMS 5497/38	1
59529458	BOTTOM FLANGE SPIRAL GASKET	NO RGASKETY322, FOR 50MM NB TYPE 603 EDR GLOBE VALVE FOR NOX CONTROL WATER INJECTION SKID FOR GAS TURBINE - OFF-BASE SPARES - EXH. GAS SYSTEM 5497/39	2
59529466	GLAND STEM UPPER WIPER	NO IJ82706332 FOR 50MM NB TYPE 603 EDR GLOBE ISOLATING VALVE FOR NOX CONTROL WATER INJECTION SKID FOR GAS TURBINE - OFF-BASE SPARES - EXH. GAS SYSTEMS 5498/40	2

FRAME 9E OFF BASE GAS TURBINE SPARES

59529474	PISTON RING	NO 1U225705092 FOR 50MM NB TYPE 603 EDR GLOBE ISOLATING VALVE FOR NOX CONTROL WATER INJECTION SKID FOR GAS TURBINE - OFF-BASE SPARES - EXH. GAS SYSTEM 5498/41	2
59651008	DIAPHRAGM	FOR MASONEILAN 1 1/2"NB PRESSURE CONTROL VALVE TYPE 525-50 RANGE 5-30 PSI, SET 20PSI, DIAPH, MAX PRESS 250PSI. FOR NOX CONTROL WATER INJECTION SKID FOR GAS TURBINE - OFF-BASE SPARES - EXH. GAS SYSTEM 5498/43	2
59651105	VALVE SPINDLE PACKING	NO 005675595966 FOR MASONEILAN CAMFLEX II VALVE, 1 1/2"NB, 600 ANSI, MODEL 90-35012. SERIAL NO CEC 11233-1-1 AND REF S-89773-008-90-1 FOR NOX CONTROL INJECTION SKID FOR GAS TURBINE - OFF-BASE SPARES - EXH. GAS SYSTEMS 5499/45	2
59529806	BRAKE BOARD NO 3377	FOR FLO-TORK ADAC ACTUATOR, NO PB 0024787A. ACTUATOR MODEL NO 90RA, SERIAL NO 90-2190-1-2 FOR NOX CONTROL INJECTION SKID FOR GAS TURBINE - OFF-BASE SPARES - EXH. GAS SYSTEMS 5499/46	1
59530014	REPAIR KIT KT15A1100A01 FOR FIG 15 GUEST & CH	VALVE CONSISTING OF CUP WASHER, SEAT WASHER, BRASS WASHER, COVER GASKET AND BODY GASKET	1
		FOR DEMIN. WATER TANK FOR GAS TURBINE - OFF-BASE SPARES - EXH. GAS SYSTEMS 5500/3	
34350101	THERMOCOUPLE CODE LTG1D-1A, 1B	DUPLEX, CHROME/ALUM, BRUSH DRG B3140603. FOR GENERATOR EE AND NEE BEARING DRAIN FOR GAS TURBINES OFF BASE SPARES - MEDIUM VOLTAGE SYSTEM 5602/24, 5602/25	2
34350128	THERMOCOUPLE CODE BTGJ1-2A, 2B	AND BRGJ-1A, 1B DUPLEX BRUSH NO B3140603. FOR GENERATOR NEE BEARING METAL OFF BASE SPARES - MEDIUM VOLTAGE SYSTEM 5602/26, 5602/27	2

FRAME 9E OFF BASE GAS TURBINE SPARES

34350144	THERMOCOUPLE CODE BRGJ2-2A, 2B	AND BTGJ2-1A, 1B, DUPLEX. BRUSH DRG B3140603. FOR GENERATOR EE BEARING METAL FOR OFF BASE SPARES - MEDIUM VOLTAGE SYSTEM 5602/28, 5602/29	2
45070032	MOTOR 4KW 1000 RPM	FRAME NO D132, W-DA132ML-H, ALUMINIUM WORLD SERIES FOOT & FLANGE MOUNTED, 380/415V, 3 PHASE, 50HZ. MANUFACTURER:BROOKS CROMPTON FOR JACKING OIL PUMP GAS TURBINES OFF BASE SPARES - MEDIUM VOLTAGE SYSTEM 5602/30B	1
53125002	VOLTAGE MONITOR CARD 9602947	SPARES FOR GT GENERATOR MVAR, GEN ARRGT DRG B9602941. GAS TURBINES OFF BASE SPARES - MEDIUM VOLTAGE SYSTEM 5603/31	1
53125010	POWER FACTOR CONTROL CARD	9602943. SPARES FOR GT GENERATOR MVAR, GEN ARRGT DRG B9602941. GAS TURBINES OFF BASE SPARES - MEDIUM VOLTAGE SYSTEM 5603/32	1
53125029	EXCITATION MONITOR CARD	9608488. SPARES FOR GT GENERATOR MVAR, GEN ARRGT DRG B9602941 GAS TURBINES OFF BASE SPARES - MEDIUM VOLTAGE SYSTEM 5603/33	1
53125037	EXCITATION LIMITER CARD	9615175. SPARES FOR GT GENERATOR MVAR, GEN ARRGT DRG B9602941 GAS TURBINES OFF BASE SPARES - MEDIUM VOLTAGE SYSTEM 5603/34	1
53125045	AUTO POWER CARD 9602933	SPARES FOR GT GENERATOR MVAR, GEN ARRGT DRG B9602941 GAS TURBINES OFF BASE SPARES - MEDIUM VOLTAGE SYSTEM 5603/35	1
53125053	CONTROL CARD 9611592	SPARES FOR GT GENERATOR MVAR, GEN ARRGT DRG B9602941 GAS TURBINES OFF BASE SPARES - MEDIUM VOLTAGE SYSTEM 5603/36	1
53125061	MOTORISED POTENTIOMETER UNIT	BRUSH DRG NO 26661/014 SPARES FOR GT GENERATOR MVAR, GEN. ARRGT. DRG B9602941. GAS TURBINES OFF BASE SPARES - MEDIUM VOLTAGE SYSTEM 5604/38	1

FRAME 9E OFF BASE GAS TURBINE SPARES

53125100	ELECTRONIC CONTROL BOARD	BRUSH DRG PT NO 09607087. SPARES FOR MVAR AUXILIARY RACK (TWIN) GA DRG A9615234 GAS TURBINES OFF BASE SPARES - MEDIUM VOLTAGE SYSTEM 5604/39	1
53125118	CONTACTOR C/W LATCH - 110V	FOR GT3 & 4 AVR FIELD SUPPRESSION.	2
53125126	RELAY - 125V DC	FOR GT3 & 4 AVR FIELD SUPPRESSION.	2
49094009	VARLEY VP/2 26V RELAY	FOR GAS TURBINE GENERATOR MVAR NO B9602441 OFF BASE SPARES - MEDIUM VOLTAGE SYSTEM 5604/37	4
49094033	RELAY & BASE TYPE 125V	BRUSH NO 25771-167. FOR MVAR AUXILIARY TWIN RACK GA DRG A9615234. GAS TURBINES OFF BASE SPARES - MEDIUM VOLTAGE SYSTEM 5604/42	2
30240590	DIODE BRIDGE TYPE 36MB120A		1
30125774	POTENTIOMETER 26632/032		1
30261759	SW06PHN400-S DIODE	ERSKINE DRG J8552FCAT, ITEM 16, REF ST1/D2. 5605/2	2
53311000	CONTROLLER 240V REF CV-CONT	NO J8552FCAT ITEM 26 FOR ERSKINE ALARM BATTERY CHARGER TYPE DUAL CV24/63 SERIAL NOS 8552F/1A & 1B GAS TURBINE - DIRECT CURRENT SYSTEM 5605/3	1
53311019	MODULE REF RF1/CV	NO J8552FCAT ITEM 30 FOR ERSKINE ALARM BATTERY CHARGER TYPE DUAL CV24/63 SERIAL NOS 8552F/1A & 1B GAS TURBINE - DIRECT CURRENT SYSTEM 5605/4	2
53311027	MODULE REF CG VIN/24	NO J8552FCAT ITEM 32 FOR ERSKINE ALARM BATTERY CHARGER TYPE DUAL CV24/63 SERIAL NOS 8552F/1A & 1B GAS TURBINE - DIRECT CURRENT SYSTEM 5605/5	1
53311035	MODULE REF LV/HV VD/24	NO J8552FCAT ITEM 33 FOR ERSKINE ALARM BATTERY CHARGER TYPE DUAL CV 24/63 SERIAL NOS 8552F/1A & 1B GAS TURBINE - DIRECT CURRENT SYSTEM 5605/6	1

FRAME 9E OFF BASE GAS TURBINE SPARES

53010906	POWER SUPPLY 220V ITEM A10-A1	SPARES FOR TRANSBLOC 5KVA, DRG NO D415E110/45/2RFG-P5-220A7EVE FB NO 92046021 AEG DRG U4008.11.001.CCT.3.B GAS TURBINES OFF BASE SPARES - DC SYSTEMS 5606/8	1
53010914	REGULATOR RN1 MOD.6	ITEM A10-A21. SPARES FOR TRANSBLOC 5KVA, D415E110/45/2RFG-P5-2207EVE FB NO 92046021 AEG DRAWING U4008.11.001.CCT.3.B GAS TURBINES OFF BASE SPARES - DC SYSTEMS 5606/9	1
53010922	FIRING STAGE ITEM A80	SPARES FOR TRANSBLOC 5KVA, D415E110/45/2RFG-P5-220A7EVE FB NO 92046021 AEG DRAWING U4008.11.001.CCT.3.B GAS TURBINES OFF BASE SPARES - DC SYSTEMS 5606/10	1
53010930	TRANSISTOR MODULE CZ300R 06K	ITEM A3-V11/43. SPARES FOR TRANSBLOC 5KVA, D415E110/45/2RFG-P5-2207EVE FB NO 92046201 DRAWING U4008.11.001.CCT.3.A GAS TURBINES OFF BASE SPARES - DC SYSTEM 5607/12	1
53010949	PULSE GENERATOR ITEM A10-A3	SPARES FOR TRANSBLOC 5KVA, D415E110/45/2RFG-P5-220A7EVE FB NO 92046021 AEG DRAWING U4008.11.001.CCT.3.A GAS TURBINES OFF BASE SPARES - DC SYSTEMS 5607/13	1
53010957	CONTROL CARD ITEM A10-A4	SPARES FOR TRANSBLOC 5KVA, D415E110/45/2RFG-P5-220A7EVE FB NO 92046021 AEG DRAWING U4008.11.001.CCT.3.A GAS TURBINES OFF BASE SPARES- DC SYSTEMS 5607/14	1

FRAME 9E OFF BASE GAS TURBINE SPARES

53010965	POWERBLOC 1600 KOC CIRCUIT	TYPE TT60N ITEM A6-V81 SPARES FOR TRANSBLOC 5KVA, D415E110/45/2RFG-P5-2207EVE FB NO 92046201 AEG DRAWING U4008.11.001.CCT.3.A GAS TURBINES OFF BASE SPARES - DC SYSTEMS 5607/16	1
53010973	INTERFACE INVERTER WITH	INTEGRAL EVE CARD. SPARES FOR TRANSBLOC 5KVA, D415E110/45/2RFG-P5-2207EVE, FB NO 92046201 AEG DRAWING NO U4008.11.001.CCT.3.C GAS TURBINES OFF BASE SPARES - DC SYSTEM 5607/17	1
53010981	INTERFACE RECTIFIER SK1.415V	ITEM NO ASO. SPARES FOR TRANSBLOC 5KVA, D415E110/45/2RFG-P5-2207EVE, FB NO 92046201 AEG DRAWING NO U4008.11.001.CCT.3.C GAS TURBINES OFF BASE SPARES - DC SYSTEM 5607/18	1
53010990	PULSE TRANSMITTER CARD 1G6	ITEM NO A10-A20. SPARES FOR TRANSBLOC 5KVA, D415E110/45/2RFG-P5-2207EVE, FB NO 92046201 AEG DRAWING U4008.11.CCT.3.C GAS TURBINES OFF BASE SPARES - DC SYSTEMS 5607/19	1
53011007	SBS CONTROL-STATIC SWITCHCARD	ITEM NO A10-A5. SPARES FOR TRANSBLOC 5KVA, D415E110/45/2RFG-P5-2207EVE, FB NO 92046201 AEG DRAWING U4008.11.001.CCT.3.C GAS TURBINES OFF BASE SPARES - DC SYSTEMS 5607/20	1
53011015	POWERBLOC 1200KOF CIRCUIT	TYPE TT60N ITEM V1/V3. SPARES FOR TRANSBLOC 5KVA, D415E110/45/2RFG-P5-2207EVE, FB NO 92046201 AEG DRAWING U4008.11.001.CCT.3.C GAS TURBINES OFF BASE SPARES - DC SYSTEMS 5608/21	1
53011023	PHASE COMPARISON ITEM A10-A12	SPARES FOR TRANSBLOC 5KVA, D415E110/45/2RFG-P5-2207EVE FB NO 92046021 AEG DRAWING NO U4008.11.001.CCT.3.C. GAS TURBINES OFF BASE SPARES- DC SYSTEM 5608/22	1

FRAME 9E OFF BASE GAS TURBINE SPARES

53011031	DRIVER CIRCUIT 5KVA	ITEM A2-A1/A4. SPARES FOR TRANSBLOC 5KVA, D415E110/45/2RFG-P5-2207EVE FB NO 92046021 AEG DRAWING U4008.11.001.CCT.3.C GAS TURBINES OFF BASE SPARES - DC SYSTEMS 5608/23	1
12806536	FUSE E.S.A (IN CIRCUIT SAKS 3)		9
12466654	FUSE NH OD GL 25A 500V Q2		3
38406004	MOULDED CASE CIRCUIT BREAKER	MERLIN GERIN C125H/D16, NO M4C/CA. FOR 125V DC DISTRIBUTION BOARD GAS TURBINES OFF BASE SPARES - DC SYSTEM 5609/28	1
38406012	MOULDED CASE CIRCUIT BREAKER	MERLIN GERIN C125H/D40, NO M4C/CB/CC. FOR 125V DC DISTRIBUTION BOARD GAS TURBINES OFF BASE SPARES - DC SYSTEM 5609/28	1
53501314	CONTROL RELAY TYPE CS3C	SPRECHER & SCHUH. 125V DC. CC 2 N/O, 2 N/C. KCL 0291/(1). DRG PT NO M4E/EA SHEET 1. SPARES FOR 125V DC EMERGENCY LUB OIL PUMP SWITCHGEAR GAS TURBINES OFF BASE SPARES - DC SYSTEM 5609/31	1
53501322	CONTROL RELAY TYPE CS3C	SPRECHER & SCHUH. 125V DC. CC 3 N/C, 1 N/C. KCL 0291(3). DRG PT NO M4E/EA SHEET 1. SPARES FOR 125V DC EMERGENCY LUB OIL PUMP SWITCHGEAR GAS TURBINES OFF BASE SPARES - DC SYSTEM 5609/32	1
53501330	CONTACTOR GEC TYPE MC 125	(MC65N) WITH AUX 125V DC COIL. **(ALSO 110V AC COIL HELD IN BIN)**	1
		CC 2 N/O, 2 N/C. 1FO (J). DRG PT NO M4E/EA. SHEET 1.	
		SPARES FOR 125V DC LUB OIL PUMP SWITCHGEAR GAS TURBINES OFF BASE SPARES - DC SYSTEM 5609/33	
53501349	CONTACTOR GEC TYPE MC45	(MC22N) WITH AUX 125V DC COIL CCS 2 N/O, 2 N/C. 1FO(K)(N). DRG PT NO M4E/EA SHEET 1. SPARES FOR 125V DC EMERGENCY LUB OIL PUMP SWITCHGEAR GAS TURBINES OFF BASE SPARES - DC SYSTEM 5610/34	1

FRAME 9E OFF BASE GAS TURBINE SPARES

53501357	CONTACTOR GEC TYPE MC80	(MC42N) WITH AUX 125V DC COIL. CCS 2 N/O, 2 N/C. IFO(W). DRG PT NO M4E/EA. SHEET 1. SPARES FOR 125V DC EMERGENCY LUB OIL PUMP SWITCHGEAR GAS TURBINES OFF BASE SPARES - DC SYSTEM 5610/35	1
53501365	TELEMECANIQUE TIMING RELAY	TYPE CA3-DN22GD FOR 125V DC LUB OIL PUMP GAS TURBINES OFF BASE SPARES - DC SYSTEM 5610/36A	1
53501373	AUXILIARY CONTACT BLOCK	LA2-022A65 - 125V DC COIL NO KCL 0292(1) FOR 125V DC EMERGENCY LUB OIL PUMP SWITCHGEAR GAS TURBINES OFF BASE SPARES - DC SYSTEM 5610/36B	1
30261767	SWO6PCH075 DIODE	ERSKINE DRG J8552FCAT, ITEM 17, REFR ST1 5612/45	2
53311108	SUPPRESSION NO PL/3013/17/A/A4	FOR ERSKINE GT BATTERY CHARGER TYPE 3CV110/63 SERIAL NOS 8551F/1A & 1B GAS TURBINE - DC SYSTEMS 5612/46	1
53311116	MODULE REF RF1/3CV	FOR ERSKINE GT BATTERY CHARGER TYPE 3CV110/63 SERIAL NOS 8551F/1A & 1B GAS TURBINES - DC SYSTEMS 5612/47	1
53311124	MODULE REF MF 3VL/240	FOR ERSKINE GT BATTERY CHARGER TYPE 3CV110/63 SERIAL NOS 8551F/1A & 1B GAS TURBINES - DC SYSTEMS 5612/48	1
53311132	CONTROLLER NO CV-CONT-3PH-415V	FOR ERSKINE GT BATTERY CHARGER TYPE 3CV110/63 SERIAL NOS 8551F/1A & 1B GAS TURBINE - DC SYSTEMS 5612/49	1
53311140	MODULE REF LV/HW VD/110	FOR ERSKINE GT BATTERY CHARGER TYPE 3CV110/63 SERIAL NOS 8551F/1A & 1B GAS TURBINES - DC SYSTEMS 5612/50	2
53311159	MODULE REF CF VIN/110	FOR ERSKINE GT BATTERY CHARGER TYPE 3CV110/63 SERIAL NOS 8551F/1A & 1B GAS TURBINE - DC SYSTEMS 5612/51	1
53311167	ALARM MODULE VV/25A4D070 BO/1	(LV HV & EARTH FAULT DISABLED) FOR ERSKINE GT BATTERY CHARGER TYPE 3CV110/63 SERIAL NOS 8551F/1A & 1B GAS TURBINE - DC SYSTEMS 5612/52	1

FRAME 9E OFF BASE GAS TURBINE SPARES

53311175	ALARM MODULE REF BO/2	(LV HV ONLY DISABLED) FOR ERSKINE GT BATTERY CHARGER TYPE 3CV110/63 SERIAL NOS 8551F/1A & 1B GAS TURBINE - DC SYSTEMS 5612/53	1
49240226	AUXILIARY CONTROL RELAY VAA11	WITH SINGLE ELEMENT, 3 NO/3 NC CONTACTS IN HANDLE LOCK CASE, 110V DC/125V DC FOR GENERATOR CONTROL PANELS GAS TURBINES 5620/33	1
49240234	CHECK SYNCH. RELAY CS200, 50HZ	WITH VT RATIOS OF 11000/110V, PCB MOUNTING, UNBOXED FOR GENERATOR CONTROL PANELS FOR GAS TURBINES 5620/32	1
34350500	TAP POSITION TRANSDUCER	INPUT: 0-7200 OHMS IN 4 STEPS. OUTPUT 4-20MA. AUXILIARY SUPPLY 110V AC, 50HZ. SPARES FOR GENERATOR CONTROL PANELS GAS TURBINES ON BASE RELATED SPARES - CONTROL PANELS 5620/34	1
53851200	RTD TRANSMITTER MODULE	X-51-N-300-L, POSITIONS 1 TO 6 FOR RONAN MONITOR TYPE X-51-N-RR-20 & X87-RR-20 NO RA2595 GAS TURBINES ON BASE RELATED SPARES - CONTROL PANELS 5621/36	2
53851218	ADDER/SUBTRACTOR MODULE	NO X-51-N-440, POSITIONS 7 & 8 FOR RONAN MONITOR TYPE X-51-N-RR-20 & X87-RR-20 NO RA2595 GAS TURBINES ON BASE RELATED SPARES - CONTROL PANELS 5621/37	1
53851226	ADDER/SUBTRACTOR MODULE	NO X-51-N-440, POSITION 9 FOR RONAN MONITOR TYPE X-51-N-RR-20 & X87-RR-20 NO RA2595 GAS TURBINES ON BASE RELATED SPARES - CONTROL PANELS 5621/38	1
53851234	RELAY BOARD MODULE X-51-N-RRB	POSITIONS 11,13,15 FOR RONAN MONITOR TYPE X-51-N-RR-20 & X87-RR-20 NO RA2595 GAS TURBINES ON BASE RELATED SPARES - CONTROL PANELS 5621/39	1

FRAME 9E OFF BASE GAS TURBINE SPARES

53851242	MASTER MODULE, POSITION 1 TO 5	NO X-87-100B-GP-PP-E1 FOR RONAN MONITOR TYPE X-51-N-RR-20 & X87-RR-20 NO RA2595 GAS TURBINES ON BASE RELATED SPARES - CONTROL PANELS 5622/40	1
53851250	LINEARISER MODULE	POSITIONS 1 TO 5, NO X-87-200-100 DIN -(-40 TO 200 DEGC) FOR RONAN MONITOR TYPE X-51-N-RR-20 & X87-RR-20 NO RA2595 GAS TURBINES ON BASE RELATED SPARES - CONTROL PANELS 5622/41	1
53851269	LINEARISER MODULE	POSITIONS 1 TO 5 NO X-87-200-EU (MODIFIED TO DEG C) FOR RONAN MONITOR TYPE X-51-N-RR-20 & X87-RR-20 NO RA2595 GAS TURBINES ON BASE RELATED SPARES - CONTROL PANELS 5622/42	1
53851277	INPUT CARD (A)	POSITIONS 6 TO 11 NO X87-400-GP-LC-RSO-RD495-OPT1 FOR RONAN MONITOR TYPE X-51-N-RR-20 & X87-RR-20 NO RA2595 GAS TURBINES ON BASE RELATED SPARES - CONTROL PANELS 5622/43	1
53851285	INPUT CARD (D)	POSITION 12 NO X87-400-GP-RSO FOR RONAN MONITOR TYPE X-51-N-RR-20 & X87-RR-20 NO RA2595 GAS TURBINES ON BASE RELATED SPARES - CONTROL PANELS 5622/44	1
53851293	INPUT CARD (B)	POSITION 13 NO X87-400-GP-RSO-RD495-OPT1. FOR RONAN MONITOR TYPE X-51-N-RR-20 & X87-RR-20 NO RA2595 GAS TURBINES ON BASE RELATED SPARES - CONTROL PANELS 5622/45	1
53851307	INPUT CARD (C)	POSITIONS 14 TO 20 NO X87-400-GP-RSO-RD445-OPT1. FOR RONAN MONITOR TYPE X-51-N-RR-20 & X87-RR-20 NO RA2595 GAS TURBINES ON BASE RELATED SPARES - CONTROL PANELS 5622/46	1

FRAME 9E OFF BASE GAS TURBINE SPARES

53501004	ISOLATOR 28 AMP 3 POLE (BA)	(IMI, SANTON, P/NO CMI 19). DRG 20T-0441/13. SPARES FOR SERVICES BOARD SER/NO 7DY4931 TAG NO 05XC. GAS TURBINES OFF BASE SPARES - LOW VOLTAGE SYSTEM 5623/1, 5682/1	3
53501012	ISOLATOR 40 AMP 3 POLE (BC/S)	(IMI, SANTON, P/NO CMI 19). DRG 20T-0441/03. SPARES FOR SERVICES BOARD SER/NO 7DY4931 TAG NO 05XC. GAS TURBINES OFF BASE SPARES - LOW VOLTAGE SYSTEM 5623/2,5682/2	1
53501020	ISOLATOR 75 AMP 3 POLE (BF/S)	(IMI, SANTON, P/NO CMI 19). DRG NO 20T-0441/04. SPARES FOR SERVICES BOARD SER/NO 7DY4931 TAG NO 05XC. GAS TURBINES OFF BASE SPARES - LOW VOLTAGE SYSTEM 5623/4,5682/3	1
53501039	ISOLATOR AUX 4 N/O (BA)	(IMI, SANTON, P/NO CMI 19). DRG 20T-0566/01. SPARES FOR SERVICES BOARD SER/NO 7DY4931 TAG NO 05XC. GAS TURBINES OFF BASE SPARES - LOW VOLTAGE SYSTEM 5623/5, 5682/4	3
53501047	ISOLATOR AUX 6 N/O 2N/C (CB)	(IMI, SANTON, P/NO CMI 19). DRG 20T-0566/04. SPARES FOR SERVICES BOARD SER/NO 7DY4931 TAG NO 05XC. GAS TURBINES OFF BASE SPARES - LOW VOLTAGE SYSTEM 5692/5	2
53501055	AUX DRIVE LINK (BA)	(IMI, SANTON, P/NO CMI 19). DRG 43Y-5567/01. SPARES FOR SERVICES BOARD SER/NO 7DY4931 TAG NO 05XC. GAS TURBINES OFF BASE SPARES - LOW VOLTAGE SYSTEM 5623/6,5683/6	4
53501063	ISOLATOR 150A 20T-0441/05 (BG)	DRG REF TDY 4931. IMI SANTON. SPARES FOR GT MOTOR CONTROL CENTRE GAS TURBINES ON BASE RELATED SPARES 5623/3	1
38340194	CLUSTER CONTACT (AA)	LL6402 PL 10074-40 (AA). FOR AIR CIRCUIT BREAKER TYPE 2000A. MODEL M-PACT 20-3W-MOO 415V DRG KCC0238/1 GAS TURBINES ON BASE RELATED SPARES 5624/9	3

FRAME 9E OFF BASE GAS TURBINE SPARES

38340208	FIXED ARC CONTACT (AA)	NO LL5307Z11877-2 FOR AIR CIRCUIT BREAKER 1200A. MODEL M-PACT 12-3W-MOO. PART REF CMI 253 GAS TURBINES OFF BASE SPARES - LOW VOLTAGE SYSTEM 5623/7,5683/8	3
38340216	MOVING ARC CONTACT (AA)	NO LL5307Z1663-2 FOR AIR CIRCUIT BREAKER 1200A. MODEL M-PACT 12-3W-MOO. PART REF CMI 253 GAS TURBINES OFF BASE SPARES - LOW VOLTAGE SYSTEM 5624/8, 5683/9	3
38340224	CLUSTER CONTACT (AA)	NO LL6402PL10078-10 FOR AIR CIRCUIT BREAKER 1200A. MODEL M-PACT 12-3W-MOO. PART REF CMI 253 GAS TURBINES OFF BASE SPARES - LOW VOLTAGE SYSTEM 5683/10	3
38340232	ARC CHUTE (AA)	NO LL738650152-1 FOR AIR CIRCUIT BREAKER 1200A. MODEL M-PACT 12-3W-MOO. PART REF CMI 253 GAS TURBINES OFF BASE SPARES - LOW VOLTAGE SYSTEM 5624/10,5683/11	3
38340240	SHUNT TRIP COIL 100V DC (AA)	FOR AIR CIRCUIT BREAKER 1200A. MODEL NO M-PACT 12-3W-MOO. PART REF CMI GAS TURBINES OFF BASE SPARES - LOW VOLTAGE SYSTEM 5623/10,5683/12	1
38340259	ELECT RELEASE COIL 110V DC(AA)	FOR AIR CIRCUIT BREAKER 1200A. MODEL M-PACT 12-3W-MOO. PART REF CMI 253 GAS TURBINES OFF BASE SPARES - LOW VOLTAGE SYSTEM 5623/12, 5683/13	1
38340267	PAWL RETURN SPRING (AA)	NO LL7530Z11497-1. FOR AIR CIRCUIT BREAKER 1200A. MODEL M-PACT 12-3W-MOO. PART REF CMI 253 GAS TURBINES OFF BASE SPARES - LOW VOLTAGE SYSTEM 5623/13, 5683/14	4
38340275	LEVER RETURN SPRING (AA)	NO LL5310Z10839-1. FOR AIR CIRCUIT BREAKER 1200A. MODEL M-PACT 12-3W-MOO. PART REF CMI 253 GAS TURBINES OFF BASE SPARES - LOW VOLTAGE SYSTEM 5683/15	1

FRAME 9E OFF BASE GAS TURBINE SPARES

38340283	CATCH RESET SPRING (AA)	NO 608Z31541-412. FOR AIR CIRCUIT BREAKER 1200A. MODEL M-PACT 12-3W-MOO. PART REF CMI 253 GAS TURBINES OFF BASE SPARES - LOW VOLTAGE SYSTEM 5684/16	1
38340291	RELEASE LEVER SPRING (AA)	NO 608Z31544-512. FOR AIR CIRCUIT BREAKER 1200A. MODEL M-PACT 12-3W-MOO. PART REF CMI 253 GAS TURBINES OFF BASE SPARES - LOW VOLTAGE SYSTEM 5684/17	1
38340305	AMMETER SELECTOR SWITCH (AA)	NO 88203/510. FOR AIR CIRCUIT BREAKER 1200A. MODEL M-PACT 12-3W-MOO. PART REF CMI 253 GAS TURBINES OFF BASE SPARES - LOW VOLTAGE SYSTEM 5684/18	1
38340313	VOLTMETER SELECTOR SWITCH (AA)	NO 88203/520 FOR AIR CIRCUIT BREAKER 1200A. MODEL M-PACT 12-3W-MOO. PART REF CMI 253 GAS TURBINES OFF BASE SPARES - LOW VOLTAGE SYSTEM 5684/19	1
38340321	CONTROL SWITCH (AA)	NO KCL0240/1. FOR AIR CIRCUIT BREAKER 1200A. MODEL M-PACT 12-3W-MOO. PART REF CMI 253 GAS TURBINES OFF BASE SPARES - LOW VOLTAGE SYSTEM 5684/20	1
38340330	TEST SWITCH OP HEAD (BA)	NO 88023/313. FOR AIR CIRCUIT BREAKER 1200A. MODEL M-PACT 12-3W-MOO. PART REF CMI 253 GAS TURBINES OFF BASE SPARES - LOW VOLTAGE SYSTEM 5684/21	4
38340348	TEST SWITCH CONTACT BLOCK (BA)	NO 88028/120. FOR AIR CIRCUIT BREAKER 1200A. MODEL M-PACT 12-3W-MOO. PART REF CMI 253 GAS TURBINES OFF BASE SPARES - LOW VOLTAGE SYSTEM 5684/22	5
38340356	SELECTOR SWITCH 1FO-E	FOR AIR CIRCUIT BREAKER 1200A. MODEL M-PACT 12-3W-MOO. PART REF CMI 253 GAS TURBINES OFF BASE SPARES - LOW VOLTAGE SYSTEM 5684/23	3

FRAME 9E OFF BASE GAS TURBINE SPARES

38340364	CUBICLE HEATER SWITCH (AA)	NO 88203/102. FOR AIR CIRCUIT BREAKER 1200A. MODEL M-PACT 12-3W-MOO. PART REF CMI 253 GAS TURBINES OFF BASE SPARES - LOW VOLTAGE SYSTEM 5684/24	1
38340372	SELECTOR SWITCH (AB) 1FO-X	FOR AIR CIRCUIT BREAKER 1200A. MODEL M-PACT 12-3W-MOO. PART REF CMI 253 GAS TURBINES OFF BASE SPARES - LOW VOLTAGE SYSTEM 5684/25	1
38340380	SELECTOR SWITCH (BC/S) 1FO-S	FOR AIR CIRCUIT BREAKER 1200A. MODEL M-PACT 12-3W-MOO. PART REF CMI 253 GAS TURBINES OFF BASE SPARES - LOW VOLTAGE SYSTEM 5684/26	1
38340399	PUSHBUTTON CONTACT BLOCK (BA)	1-N/O, NO 88028/105. FOR AIR CIRCUIT BREAKER 1200A. MODEL M-PACT 12-3W-MOO. PART REF CMI 253 GAS TURBINES OFF BASE SPARES - LOW VOLTAGE SYSTEM 4684/27	1
38340402	PUSHBUTTON CONTACT BLOCK (BA)	1-N/C, NO 88028/100. FOR AIR CIRCUIT BREAKER 1200A. MODEL M-PACT 12-3W-MOO. PART REF CMI 253 GAS TURBINES OFF BASE SPARES - LOW VOLTAGE SYSTEM 5684/28	1
38340410	CUBICLE HEATER 60/90W (AB)	98001/102 FOR AIR CIRCUIT BREAKER 1200A. GEC ALSTOM INST EQUIP LTD MODEL M-PACT 12-3W- M00 PART REF CMI 253 FOR GAS TURBINE - OFF-BASE SPARES - LOW VOLTAGE SYSTEM 5685/29	2
38340429	CONTACTOR 110V DC 1FO-A	FOR AIR CIRCUIT BREAKER 1200A. MODEL M-PACT 12-3W-MOO. PART REF CMI 253 GAS TURBINES OFF BASE SPARES - LOW VOLTAGE SYSTEM 5627/4, 5685/30	1
38340437	SELECTOR SWITCH PR10-2253-D4	EPM. (BS). NO 1 FO-D. FOR AIR CIRCUIT BREAKER TYPE 2000A. MODEL M-PACT 20-3W-MOO 415V. DRG KCC0238/1. GAS TURBINES ON BASE RELATED SPARES 5625/24	1

FRAME 9E OFF BASE GAS TURBINE SPARES

38340445	SELECTOR SWITCH PR10-2352-C4	EPM, (BA/S), NO 1 FO-F. FOR AIR CIRCUIT BREAKER TYPE 2000A. MODEL M-PACT 20-3W-MOO 415V. DRG KCC0238/1. GAS TURBINES ON BASE RELATED SPARES 5625/26	2
38340453	CONTROL RELAY 110V DC 3-N/O	3-N/C AUX, NO KCL0542/1 FOR AIR CIRCUIT BREAKER 1200A. MODEL M-PACT 12-3W-MOO. PART REF CMI 253 GAS TURBINES OFF BASE SPARES - LOW VOLTAGE SYSTEM 5629/60,5685/33	1
38340470	OVERLOAD RELAY 7-10.5A (BA)	REF CMI 10(C100), MODEL MT015, DRG 86702/109 FOR AIR CIRCUIT BREAKER 1200A. MODEL M-PACT 12-3W-MOO. PART REF CMI 253 GAS TURBINES OFF BASE SPARES - LOW VOLTAGE SYSTEM 5630/66, 5685/35	1
38340488	OVERLOAD RELAY 30-42A (BA)	REF CMI 228, MODEL MT081, DRG 86702/241. FOR AIR CIRCUIT BREAKER 1200A. MODEL M-PACT 12-3W-MOO. PART REF CMI 253 GAS TURBINES OFF BASE SPARES - LOW VOLTAGE SYSTEM 5685/36	1
38340496	CONTROL RELAY 110V 50HZ (BA)	REF CMI 150, MODEL MCO/22E. DRG NO 86400/518. FOR AIR CIRCUIT BREAKER 1200A. MODEL M-PACT 12-3W-MOO. PART REF CMI 253 GAS TURBINES OFF BASE SPARES - LOW VOLTAGE SYSTEM 5630/72, 5685/37	1
38340500	CONTROL RELAY HL4K-40E 110V	50HZ FOR AIR CIRCUIT BREAKER 1200A. MODEL M-PACT 12-3W-MOO. PART REF CMI 253 GAS TURBINES OFF BASE SPARES - LOW VOLTAGE SYSTEM 5685/38A	1
38340518	CONTROL RELAY 110V DC (AA)	2-N/O, 2-N/C. REF CMI 143. MODEL C93C. DRG REF KCL057/1. FOR AIR CIRCUIT BREAKER 1200A. MODEL M-PACT 12-3W-MOO. PART REF CMI 253 GAS TURBINES OFF BASE SPARES - LOW VOLTAGE SYSTEM 5685/39	1

FRAME 9E OFF BASE GAS TURBINE SPARES

38340526	AUX CONTACT BLOCK 4-N/C (AA)	REF CMI 143, MODEL C53-P04. DRG NO KCL0571/2. FOR AIR CIRCUIT BREAKER 1200A. MODEL M-PACT 12-3W-MOO. PART REF CMI 253 GAS TURBINES OFF BASE SPARES - LOW VOLTAGE SYSTEM 5686/40	1
38340534	HI22 AUX. FOR RELAY HL4K-40E	FOR AIR CIRCUIT BREAKER 1200A, GEC ALSTHOM INST EQUIP LTD MODEL M-PACT 12-3W- MOO. PART REF CMI 253 FOR GAS TURBINE - OFF-BASE SPARES - LOW VOLTAGE SYSTEM 5685/38B	1
38340542	ADD-ON AUX. 1 C/O FOR MC5 (BD)	PC 0796, NO 84011/605. FOR AIR CIRCUIT BREAKER TYPE 2000A. MODEL M-PACT 20-3W-MOO 415V. DRG KCC0238/1. GAS TURBINES ON BASE RELATED SPARES 5627/47	1
38340569	UNDER VOLTAGE RELAY 415V AC	REF CMI 78, MODEL BAP 1223 (AA), NO KCL0239/1. FOR AIR CIRCUIT BREAKER 1200A. MODEL M-PACT 12-3W-MOO. PART REF CMI 253 GAS TURBINES OFF BASE SPARES - LOW VOLTAGE SYSTEM 5686/44	1
38340577	OVERCURRENT RELAY	(PHASE & EARTH FAULT) 415V AC, CASE SIZE 8, REF R8054, R6054, MODEL MCGG 82. NO KCL0241/1 FOR AIR CIRCUIT BREAKER 1200A. MODEL M-PACT 12-3W-MOO. PART REF CMI 253 GAS TURBINES OFF BASE SPARES - LOW VOLTAGE SYSTEM 5634/104,5686/45	1
38340585	TRIPPING & CONTROL RELAY (AA)	110V DC, CASE SIZE 4, REF 8015, R6015, MODEL MVAJ13. DRG NO KCL0241/2. FOR AIR CIRCUIT BREAKER 1200A. MODEL M-PACT 12-3W-MOO. PART REF CMI 253 GAS TURBINES OFF BASE SPARES - LOW VOLTAGE SYSTEM 5634/103,5686/41	1

FRAME 9E OFF BASE GAS TURBINE SPARES

38340593	TRIP CIRCUIT SUPERVISION RELAY	(AA) 110V DC, CASE SIZE 2, REF R8010, R6010, MODEL MVAX12, NO KCL0241/3. FOR AIR CIRCUIT BREAKER 1200A. MODEL M-PACT 12-3W-MOO. PART REF CMI 253 GAS TURBINES OFF BASE SPARES - LOW VOLTAGE SYSTEM 5633/102, 5686/47	1
38340607	EARTH FAULT RELAY (AB) 415V AC	CASE SIZE 4, REF R8054, R6054, MODEL MCGG22, NO KCL0300/1 FOR AIR CIRCUIT BREAKER 1200A. MODEL M-PACT 12-3W-MOO. PART REF CMI 253 GAS TURBINES OFF BASE SPARES - LOW VOLTAGE SYSTEM 5686/48	1
38340615	AMMETER 0-10-60A (BA)	MODEL DIN 72, NO KCL0373/6 FOR AIR CIRCUIT BREAKER 1200A. MODEL M-PACT 12-3W-MOO. PART REF CMI 253 GAS TURBINES OFF BASE SPARES - LOW VOLTAGE SYSTEM 5635/113, 5687/49	1
38340623	AMMETER 0-15-90A (BA) FOR ADMI	MODEL DIN 72, NO KCL0373/7 FOR AIR CIRCUIT BREAKER 1200A. MODEL M-PACT 12-3W-MOO. PART REF CMI 253 GAS TURBINES OFF BASE SPARES - LOW VOLTAGE SYSTEM 5635/114, 5687/50	1
38340631	AMMETER 0-80-480A (BA)	MODEL DIN 72, NO KCL0373/9. FOR AIR CIRCUIT BREAKER 1200A. MODEL M-PACT 12-3W-MOO. PART REF CMI 253 GAS TURBINES OFF BASE SPARES - LOW VOLTAGE SYSTEM 5635/116,5687/51	1
38340640	MAIN CONTACT SET	FOR 110V AC CONTACTOR NO 84012/112. FOR AIR CIRCUIT BREAKER 1200A. MODEL M-PACT 12-3W-MOO. PART REF CMI 253 GAS TURBINES OFF BASE SPARES - LOW VOLTAGE SYSTEM 5627/44, 5687/52	4

FRAME 9E OFF BASE GAS TURBINE SPARES

38340658	110V DC COIL	FOR CONTACTOR NO 84012/112. FOR AIR CIRCUIT BREAKER 1200A. MODEL M-PACT 12-3W-MOO. PART REF CMI 253 GAS TURBINES OFF BASE SPARES - LOW VOLTAGE SYSTEM 5627/45 & 46,5687/54, 5687/53	5
38340666	110V AC CONTACTOR	MC 5 (BA), NO 84012/112. FOR AIR CIRCUIT BREAKER TYPE 2000A. MODEL M-PACT 20-3W-M00 415V. DRG KCC0238/1. GAS TURBINES ON BASE RELATED SPARES 5627/43	1
38340674	MAIN CONTACT SET	FOR 110V AC CONTACTOR 84041/212. FOR AIR CIRCUIT BREAKER 1200A. MODEL M-PACT 12-3W-MOO. PART REF CMI 253 GAS TURBINES OFF BASE SPARES - LOW VOLTAGE SYSTEM 5628/55, 5687/55	1
38340682	110V AC COIL	FOR 110V AC CONTACTOR 84041/212. FOR AIR CIRCUIT BREAKER 1200A. MODEL M-PACT 12-3W-MOO. PART REF CMI 253 GAS TURBINES OFF BASE SPARES - LOW VOLTAGE SPARES 5628/56, 5687/56	1
38340690	OLR RESET BUTTON ACTUATOR V14	(BA), NO 88026/997. FOR AIR CIRCUIT BREAKER TYPE 2000A. MODEL M-PACT 20-3W-MOO 415V. DRG KCC0238/1. GAS TURBINES ON BASE RELATED SPARES 5627/39	3
38340704	OLR RESET BUTTON STUD (BA)	NO 43Y-5574/01. FOR AIR CIRCUIT BREAKER TYPE 2000A. MODEL M-PACT 20-3W-MOO 415V. DRG KCC0238/1. GAS TURBINES ON BASE RELATED SPARES 5627/40	3
38340712	OLR RESET BUTTON STUD (BH/S)	NO 43Y-5574/02. FOR AIR CIRCUIT BREAKER TYPE 2000A. MODEL M-PACT 20-3W-MOO 415V. DRG KCC0238/1. GAS TURBINES ON BASE RELATED SPARES 5627/41	1

FRAME 9E OFF BASE GAS TURBINE SPARES

38340763	ADD-ON AUX 1 N/C FOR CONTACTOR	MC-15-N, REF PC 1903, (BD), NO 86405/701 FOR AIR CIRCUIT BREAKER TYPE 2000A. MODEL M-PACT 20-3W-MOO 415V. DRG KCC0238/1. GAS TURBINES ON BASE RELATED SPARES 5628/49	1
38340771	ADD-ON AUX 1 N/C FOR CONTACTOR	MC-15-N, REF PC 1904, (BD), NO 86405/782. FOR AIR CIRCUIT BREAKER TYPE 2000A. MODEL M-PACT 20-3W-MOO 415V. DRG KCC0238/1. GAS TURBINES ON BASE RELATED SPARES 5628/50	1
38340798	MAIN CONTACT SET 1791	NO 84041/112. FOR AIR CIRCUIT BREAKER TYPE 2000A. MODEL M-PACT 20-3W-MOO 415V. DRG KCC0238/1. GAS TURBINES ON BASE RELATED SPARES 5628/52	1
38340801	110V AC COIL 1400	FOR CONTACTOR NO 84041/112. FOR AIR CIRCUIT BREAKER TYPE 2000A. MODEL M-PACT 20-3W-MOO 415V. DRG KCC0238/1. GAS TURBINES ON BASE RELATED SPARES 5628/53	1
38340852	MAIN CONTACT SET 1380	FOR CONTACTOR NO 84041/612. FOR AIR CIRCUIT BREAKER TYPE 2000A. MODEL M-PACT 20-3W-MOO 415V. DRG KCC0238/1. GAS TURBINES ON BASE RELATED SPARES 5629/58	1
38340860	110V AC COIL 1412	FOR CONTACTOR NO 84041/612. FOR AIR CIRCUIT BREAKER TYPE 2000A. NMODEL M-PACT 20-3W-MOO 415V. DRG KCC0238/1. GAS TURBINES ON BASE RELATED SPARES 5629/59	1
38340895	OVERLOAD RELAY 1.5-2.2A (BA)	MT-015, NO 86702/105 FOR AIR CIRCUIT BREAKER TYPE 2000A. MODEL M-PACT 20-3W-MOO 415V. DRG KCC0238/1. GAS TURBINES ON BASE RELATED SPARES 5629/64	1
38340909	OVERLOAD RELAY 4.7-7.1A (BA)	MT-015. NO 86702/108. FOR AIR CIRCUIT BREAKER TYPE 2000A. MODEL M-PACT 20-3W-MOO 415V. DRG KC0238/1. GAS TURBINES ON BASE RELATED SPARES 5629/65	2

FRAME 9E OFF BASE GAS TURBINE SPARES

38340941	MOVING CARRIAGE ASSY	P107205-40 FOR MST-160. FOR AIR CIRCUIT BREAKER TYPE 2000A. MODEL M-PACT 20-3W-MOO 415V. DRG KC0238/1. GAS TURBINES ON BASE RELATED SPARES 5631/78	1
38340950	FIXED CONTACT ASSY P107208-20	FOR MST-160. FOR AIR CIRCUIT BREAKER TYPE 2000A. MODEL M-PACT 20-3W-MOO 415V. DRG KCC0238/1. GAS TURBINES ON BASE RELATED SPARES 5631/79	6
38340976	MOVING CARRIAGE ASSY	P107214-20 FOR MST-315. FOR AIR CIRCUIT BREAKER TYPE 2000A. MODEL M-PACT 20-3W-MOO 415V. DRG KCC0238/1. GAS TURBINES ON BASE RELATED SPARES 5632/86	1
38340984	FIXED CONTACT ASSY P107276-20	FOR MST-315. FOR AIR CIRCUIT BREAKER TYPE 2000A. MODEL M-PACT 20-3W-MOO 415V. DRG KCC0238/1. GAS TURBINES ON BASE RELATED SPARES 5632/87	12
38341018	FIXED CONTACT ASSY	FOR SUPERFORM SERIES 3, 1200A, F/SW. FOR AIR CIRCUIT BREAKER TYPE 2000A. MODEL M-PACT 20-3W-MOO 415V. DRG KCC0238/1. GAS TURBINES ON BASE RELATED SPARES 5633/97	1
38341026	MINIATURE CIRCUIT BREAKER (CT)	110V C60N206, NO KCL0244/1. FOR AIR CIRCUIT BREAKER TYPE 2000A. MODEL M-PACT 20-3W-MOO 415V. DRG KCC0238/1. GAS TURBINES ON BASE RELATED SPARES 5633/98	1
38341034	MINIATURE CIRCUIT BREAKER (CT)	110V C60H216, NO KCL0244/2 FOR AIR CIRCUIT BREAKER TYPE 2000A. MODEL M-PACT 20-3W-MOO 415V. DRG KCC0238/1. GAS TURBINES ON BASE RELATED SPARES 5633/99	1
38341042	RESTRICTED EARTH FAULT 4B3(AA)	REYROLLE PROTECTION, NO KCL0243/1. FOR AIR CIRCUIT BREAKER TYPE 2000A. MODEL M-PACT 20-3W-MOO 415V. DRG KCC0238/1. GAS TURBINES ON BASE RELATED SPARES 5633/100	1

FRAME 9E OFF BASE GAS TURBINE SPARES

38341050	AUXILIARY RELAY 110V DC (AA)	CASE SIZE 2, MVAA11, NO KCC0241/4 FOR AIR CIRCUIT BREAKER TYPE 2000A. MODEL M-PACT 20-3W-MOO 415V. DRG KCC0238/1. GAS TURBINES ON BASE RELATED SPARES 5633/101	1
38341085	AMMETER 0-1-6A DECNTD (BA)	DIN 72. NO KCL0373/4. FOR AIR CIRCUIT BREAKER TYPE 2000A. MODEL M-PACT 20-3W-MOO 415V. DRG KCC0238/1. GAS TURBINES ON BASE RELATED SPARES 5635/111	1
38341093	AMMETER 0-3-18A DECNTD (BA)	DIN72, NO KCL0373/5. FOR AIR CIRCUIT BREAKER TYPE 2000A. MODEL M-PACT 20-3W-MOO 415V. DRG KCC0238/1. GAS TURBINES ON BASE RELATED SPARES 5635/112	1
38341107	AMMETER 0-40-240A DECNTD (BA)	DIN72, NO KCL0373/8 FOR AIR CIRCUIT BREAKER TYPE 2000A. MODEL M-PACT 20-3W-MOO 415V. DRG KCC0238/1. GAS TURBINES ON BASE RELATED SPARES 5635/115	1
53501179	FUSESWITCH AUX. SHROUD	NO 48Y-5094/01 FOR ESSENTIAL SERVICES BOARD SERIAL TDY 4961, TAG NO O1XC & O2XC. GAS TURBINES OFF BASE SPARES - LOW VOLTAGE SYSTEM 5690/15	1
53501195	FIXED CONTACT ASSEMBLY	NO P107218-20 FOR FUSESWITCH 93249/104 FOR ESSENTIAL SERVICES BOARD SERIAL TDY 4961, TAG NO O1XC & O2XC. GAS TURBINES OFF BASE SPARES - LOW VOLTAGE SYSTEM 5690/18	1
53501209	MOVING CARRIAGE ASSY	NO P107285-40 FOR FUSESWITCH 93119/104 FOR ESSENTIAL SERVICES BOARD SERIAL TDY 4961, TAG NO O1XC & O2XC. GAS TURBINES OFF BASE SPARES - LOW VOLTAGE SYSTEM 5690/19	1

FRAME 9E OFF BASE GAS TURBINE SPARES

53501217	FIXED CONTACT ASSY P107288-20	FOR FUSES SWITCH 93119/104 FOR ESSENTIAL SERVICES BOARD SERIAL TDY 4961, TAG NO O1XC & O2XC. GAS TURBINES OFF BASE SPARES - LOW VOLTAGE SYSTEM 5690/20	1
35720719	CURRENT TRANSFORMER 80:1A	(BD/S), NO 30Z-2281. FOR AIR CIRCUIT BREAKER TYPE 2000A. MODEL M-PACT 20-3W-M00 415V. DRG KCC0238/1. GAS TURBINES ON BASE RELATED SPARES 5634/105	1
35720727	CURRENT TRANSFORMER 100:1A	(BJ), NO 30Z1945. FOR AIR CIRCUIT BREAKER TYPE 2000A. MODEL M-PACT 20-3W-M00 415V. DRG KCC0238/1. GAS TURBINES ON BASE RELATED SPARES 5634/106	1
35720735	CURRENT TRANSFORMER 150:1A	(BH/S). NO 30Z1946. FOR AIR CIRCUIT BREAKER TYPE 2000A. MODEL M-PACT 20-3W-M00 415V. DRG KCC0238/1. GAS TURBINES ON BASE RELATED SPARES 5634/107	1
35720743	CURRENT TRANSFORMER 200:1A	(BJ), NO 30Z1947. FOR AIR CIRCUIT BREAKER TYPE 2000A. MODEL M-PACT 20-3W-M00 415V. DRG KCC0238/1. GAS TURBINES ON BASE RELATED SPARES 5634/108	1
35720751	CURRENT TRANSFORMER 250:1A	(BK), NO 30Z1948. FOR AIR CIRCUIT BREAKER TYPE 2000A. MODEL M-PACT 20-3W-M00 415V. DRG KCC0238/1. GAS TURBINES ON BASE RELATED SPARES 5634/109	1
35720760	CURRENT TRANSFORMER 300:1A	(BK), NO 30Z1949. FOR AIR CIRCUIT BREAKER TYPE 2000A. MODEL M-PACT 20-3W-M00 415V. DRG KCC0238/1. GAS TURBINES ON BASE RELATED SPARES 5634/11	1
49240307	MOTOR PROTECTION RELAY 110V	(BK), 50/60HZ, NO DMPR230L000 FOR MOTOR CONTROL CENTRE GAS TURBINES ON BASE RELATED SPARES 5635/114	1

FRAME 9E OFF BASE GAS TURBINE SPARES

34451072	CALIBRATOR NO 512059-0-01	FOR ROTARY VANE METER E3.S1. MODEL LE 3 S1. ASSY 575062-21. S/NO 18KM-101165. W.P. 10.5 BAR FUEL OIL FILTERING & METERING SKID SECTION GAS TURBINES OFF BASE SPARES - DISTILLATE FUEL OIL 5643/1	1
34451080	COUPLING DRIVE NO 072103-0-01	FOR ROTARY VANE METER E3.S1. MODEL LE 3 S1. ASSY 575062-21. S/NO 18KM-101165. W.P. 10.5 BAR FUEL OIL FILTERING & METERING SKID SECTION GAS TURBINES OFF BASE SPARES - DISTILLATE FUEL OIL 5643/2	1
34451099	O-RING 512278-0-01	FOR ROTARY VANE METER E3.S1. MODEL LE 3 S1. ASSY 575062-21. S/NO 18KM-101165. W.P. 10.5 BAR FUEL OIL FILTERING & METERING SKID SECTION GAS TURBINES OFF BASE SPARES - DISTILLATE FUEL OIL 5643/3	1
34451102	PACKING GLAND GASKET	NO 010173-0-01. FOR ROTARY VANE METER E3.S1. MODEL LE 3 S1. ASSY 575062-21. S/NO 18KM-101165. W.P. 10.5 BAR. FUEL OIL FILTERING & METERING SKID SECTION GAS TURBINES OFF BASE SPARES - DISTILLATE FUEL OIL 5643/4	1
34451110	CALIBRATOR DRIVE GEAR	NO 514774-0-01. FOR ROTARY VANE METER E3.S1. MODEL LE 3 S1. ASSY 575062-21. S/NO 18KM-101165. W.P. 10.5 BAR FUEL OIL FILTERING & METERING SKID SECTION GAS TURBINES OFF BASE SPARES - DISTILLATE FUEL OIL 5643/5	1
34451129	DOUBLE GEAR 072485-0-01	FOR ROTARY VANE METER E3.S1. MODEL LE 3 S1. ASSY 575062-21. S/NO 18KM-101165. W.P. 10.5 BAR FUEL OIL FILTERING & METERING SKID SECTION GAS TURBINES OFF BASE SPARES - DISTILLATE FUEL OIL 5643/6	1

FRAME 9E OFF BASE GAS TURBINE SPARES

34451137	SINGLE GEAR 072478-0-01	FOR ROTARY VANE METER E3.S1. MODEL LE 3 S1. ASSY 575062-21. S/NO 18KM-101165. W.P. 10.5 BAR. FUEL OIL FILTERING & METERING SKID SECTION GAS TURBINE OFF BASE SPARES - DISTILLATE FUEL OIL 5643/7	1
34451145	PACKING GLAND 518630-0-01	FOR ROTARY VANE METER E3.S1. MODEL LE 3 S1. ASSY 575062-21. S/NO 18KM-101165. W.P. 10.5 BAR. FUEL OIL FILTERING & METERING SKID SECTION GAS TURBINES OFF BASE SPARES - DISTILLATE FUEL SYSTEM 5644/8	1
34451153	THRUST BEARING PLATE	NO 001111-0-01P. FOR ROTARY VANE METER E3.S1. MODEL LE 3 S1. ASSY 575062-21 S/NO 18KM-101165. W.P. 10.5 BAR. FUEL OIL FILTERING & METERING SKID SECTION GAS TURBINES OFF BASE SPARES - DISTILLATE FUEL SYSTEM 5644/9	2
34451161	BALL RETAINER 070360-0-01	FOR ROTARY VANE METER E3.S1. MODEL LE 3 S1. ASSY 575062-21. S/NO 18KM-101165. W.P. 10.5 BAR. FUEL OIL FILTERING & METERING SKID SECTION GAS TURBINES OFF BASE SPARES - DISTILLATE FUEL SYSTEM 5644/10	1
34451170	LEAD & WIRE SEAL 001627-4-00	FOR ROTARY VANE METER E3.S1. MODEL LE 3 S1. ASSY 575062-21. S/NO 18KM-101165. W.P. 10.5 BAR. FUEL OIL FILTERING & METERING SKID SECTION GAS TURBINES OFF BASE SPARES - DISTILLATE FUEL SYSTEM 5644/11	1
34451188	UPPER JACK SHAFT 512116-0-01	FOR ROTARY VANE METER E3.S1. MODEL LE 3 S1. ASSY 575032-21. S/NO 18KM-101165. W.P. 10.5 BAR. FUEL OIL FILTERING & METERING SKID SYSTEM GAS TURBINES OFF BASE SPARES - DISTILLATE FUEL SYSTEM 5644/12	1

FRAME 9E OFF BASE GAS TURBINE SPARES

34451196	LINK ASSEMBLY SHAFT	NO 512069-0-01, FOR ROTARY VANE METER E3.S1. MODEL LE 3 S1. ASSY 575062-21. S/NO 18KM-101165. W.P. 10.5 BAR. FUEL OIL FILTERING & METERING SKID SECTION GAS TURBINES OFF BASE SPARES - DISTILLATE FUEL SYSTEM 5644/13	1
34451200	JACKSHAFT BUSHING 519882-0-01	FOR ROTARY VANE METER E3.S1. MODEL LE 3 S1. ASSY 575062-21. S/NO 18KM-101165. W.P. 10.5 BAR. FUEL OIL FILTERING & METERING SKID SECTION GAS TURBINES OFF BASE SPARES - DISTILLATE FUEL SYSTEM 5644/14	2
34451218	COUPLING DRIVE 512064-0-02	FOR ROTARY VANE METER E3.S1. MODEL LE 3 S1. ASSY 575062-21. S/NO 18KM-101165. W.P. 10.5 BAR. FUEL OIL FILTERING & METERING SKID SECTION GAS TURBINES OFF BASE SPARES - DISTILLATE FUEL SYSTEM 5644/15	1
34451226	ROTOR BEARING 516108-0-01P	FOR ROTARY VANE METER E3.S1. MODEL LE 3 S1. ASSY 575062-21. S/NO 18KM-101165. W.P. 10.5 BAR. FUEL OIL FILTERING & METERING SKID SECTION GAS TURBINES OFF BASE SPARES - DISTILLATE FUEL SYSTEM 5644/16	2
34451234	THRUST BEARING 009589-0-01	FOR ROTARY VANE METER E3.S1. MODEL LE 3 S1. ASSY 575062-21. S/NO 18KM-101165. W.P. 10.5 BAR FUEL OIL FILTERING & METERING SKID SECTION GAS TURBINES OFF BASE SPARES - DISTILLATE FUEL SYSTEM 5644/17	1
34451242	LOWER BLADE 008899-0-01	FOR ROTARY VANE METER E3.S1. MODEL LE 3 S1. ASSY 575062-21. S/NO 18KM-101165. W.P. 10.5 BAR FUEL OIL FILTERING & METERING SKID SECTION GAS TURBINES OFF BASE SPARES - DISTILLATE FUEL SYSTEM 5644/18	1

FRAME 9E OFF BASE GAS TURBINE SPARES

34451250	UPPER BLADE 008898-0-01	FOR ROTARY VANE METER E3.S1. MODEL LE 3 S1. ASSY 575062-21. S/NO 18KM-101165. W.P. 10.5 BAR. FUEL OIL FILTERING & METERING SKID SECTION GAS TURBINES OFF BASE SPARES - DISTILLATE FUEL SYSTEM 5644/19	1
74431269	DESICCANT CHANGE KIT 608200193	FOR DOMNICK HUNTER MODEL DM003 AIR DRYER FOR GAS TURBINE - ESD V/V COMPRESSOR AIR SYSTEM 5647/1	1
74431277	GASKET KIT NO 608200180	FOR DOMNICK HUNTER MODEL DM003 AIR DRYER FOR GAS TURBINE - ESD V/V COMPRESSOR AIR SYSTEM 5647/2	1
75512769	E006 AA ELEMENT	FOR DOMINICK HUNTER AIR FILTER AA0006 G ESD V/V COMPRESSED AIR SYSTEM 5647/3	1
75512777	E006 AO ELEMENT	FOR DOMINICK HUNTER AIR FILTER AA0006 G ESD V/V COMPRESSED AIR SYSTEM 5647/4	1
75512815	ELEMENT NO 98245/121	FOR COMPAIR BROOMWADE AIR FILTER GPP 6A ESD V/V COMPRESSED AIR SYSTEM 5647/5	1
71180613	1/4" SAFETY VALVE	NO C23898-513 FOR BROOMWADE ESD VALVE AIR COMPRESSOR MODEL E22T FOR GAS TURBINES 5648/3	1
71180621	VALVE ASSEMBLY NO C23898-32	FOR BROOMWADE ESD VALVE AIR COMPRESSOR MODEL E22T FOR GAS TURBINES 5648/4	2
71180630	OIL LEVEL SIGHTGLASS & WASHER	NO C23898-45 FOR BROOMWADE ESD VALVE AIR COMPRESSOR MODEL E22T FOR GAS TURBINES 5648/5	1
59253150	1/2" BSP SEETRU VALVE	NO 616108883, 10 BAR LIFT. FOR COMPRESSOR RECEIVER RELIEF V/V. GAS TURBINES GENERAL SERVICE AIR 5650/1	1
59722355	VITON SEAL NO V1420005	FOR SEETRU TYPE 616108883, 1/2" BSP INLET CONNECTION, 10 BAR LIFT, VALVE. FOR GENERAL SERVICE AIR COMPRESSOR RECEIVER RELIEF V/V. GAS TURBINES 5650/3	1

FRAME 9E OFF BASE GAS TURBINE SPARES

53941004	PCB REF 552-7565-1	FOR WHESOE TYPE "ROSEMOUNT ANALYTICAL" INSERTION/SUBMERSION MODEL 1054 AC-00-07 CONDUCTIVITY SENSOR FOR WATER TREATMENT PLANT - DEMIN. WATER STORAGE SYSTEM 5653/13	1
53941012	PCB REF 00030-7832	00552-7577-1 FOR SYSTEM 030-7832-1, WM 550 ATG FOR WHESOE TYPE "ROSEMOUNT ANALYTICAL" INSERTION/SUBMERSION MODEL 1054 AC-00-07 CONDUCTIVITY SENSOR FOR WATER TREATMENT PLANT - DEMIN. WATER STORAGE SYSTEM 5653/14	1
53941020	PCB REF 00030-7819-1	FOR WHESOE TYPE "ROSEMOUNT ANALYTICAL" INSERTION/SUBMERSION MODEL 1054 AC-00-07 CONDUCTIVITY SENSOR FOR WATER TREATMENT PLANT - DEMIN. WATER STORAGE SYSTEM 5653/15	1
53850300	LAMP NO 1829	FOR RONAN ALARM ANNUNCIATOR PANEL 18.5X12RRLR-300 NOS RA2502 & RA2503 FOR GAS TURBINE 5655/1	50
53850319	LAMP MODULE	NO LM3-24VDC-V-E07251 FOR RONAN ALARM ANNUNCIATOR PANEL 18.5X12RRLR-300 NOS RA2502 & RA2503 FOR GAS TURBINE 5655/2	4
53850327	FLASHER MODULE NO FHD24-000V	FOR RONAN ALARM ANNUNCIATOR PANEL 18.5X12RRLR-300 NOS RA2502 & RA2503 FOR GAS TURBINE 5655/3	1
53850335	FILTER MODULE NO RF24-1-V	FOR RONAN ALARM ANNUNCIATOR PANEL 18.5X12RRLR-300 NOS RA2502 & RA2503 FOR GAS TURBINE 5655/4	1
53850343	FILTER MODULE NO RF24-2-V	FOR RONAN ALARM ANNUNCIATOR PANEL 18.5X12RRLR-300 NOS RA2502 & RA2503 FOR GAS TURBINE 5655/5	1
53850351	ALARM MODULE	NO F2M/1-0-2-1-0-2-0-0T/E 07251 FOR RONAN ALARM ANNUNCIATOR PANEL 18.5X12RRLR-300 NOS RA2502 & RA2503 FOR GAS TURBINE 5655/6	4

FRAME 9E OFF BASE GAS TURBINE SPARES

53850360	PUSH BUTTON UNIT NO 12PB-V	FOR RONAN ALARM ANNUNCIATOR PANEL 18.5X12RRLR-300 NOS RA2502 & RA2503 FOR GAS TURBINE 5655/7	1
53850378	ALARM MODULE	NO F2M/1-0000-V-E07251 FOR RONAN ALARM ANNUNCIATOR PANEL 18.5X12RRLR-300 NOS RA2502 & RA2503 FOR GAS TURBINE 5655/10	1
53881303	IN LINE FILTER FILT-029	FOR SIGNAL OXYGEN ANALYSER MODEL 8000 NO 219100 FOR GAS TURBINE - OFF- BASE SPARES - EXHAUST GAS SYSTEMS 5657/9	9
53881311	HEATER ASSEMBLY SENS-018	FOR SIGNAL OXYGEN ANALYSER MODEL 8000 NO 219100 FOR GAS TURBINE - OFF- BASE SPARES - EXHAUST GAS SPARES 5657/11	1
53881214	OZONE TRAP REFILL CHEM-002	FOR SIGNAL NOX ANALYSER 4000 SERIES NO 219100 FOR GAS TURBINE - OFF-BASE SPARES - EXHAUST GAS SYSTEM 5656/3	1
53881230	CONVERTER REFILL CHEM-001	FOR SIGNAL NOX ANALYSER 4000 SERIES NO 219100 FOR GAS TURBINE - OFF-BASE SPARES - EXHAUST GAS SYSTEM 5656/5	1
53881249	NOX ANALYSER SAMPLE FILTER	BOX OF 10 FOR SIGNAL NOX ANALYSER 4000 SERIES NO 219100 FOR GAS TURBINE OFF-BASE SPARES - EXHAUST GAS SYSTEMS 5656/6	20
53881257	OPTICAL WINDOW CLEANING FLUID BOTTLE NO CH	BOTTLE FOR SIGNAL NOX ANALYSER 4000 SERIES NO 219100 FOR GAS TURBINE - OFF-BASE SPARES - EXHAUST GAS SYSTEM 5656/7	2
53881265	OZONE CAPILLARY NO MC833	FOR SIGNAL NOX ANALYSER 4000 SERIES NO 219100 FOR GAS TURBINE - OFF-BASE SPARES - EXHAUST GAS SYSTEM 5656/8	3
53881273	OVEN CAPILLARY ASSEMBLY	NO MC837 FOR SIGNAL NOX ANALYSER 4000 SERIES NO 219100 FOR GAS TURBINE OFF-BASE SPARES - EXHAUST GAS SYSTEM 5656/9	2

FRAME 9E OFF BASE GAS TURBINE SPARES

53881362	TEMPERATURE CONTROL UNIT	FOR SIGNAL HEATED LINE CONTROLLER MODEL 530 NO 219100 FOR GAS TURBINE - OFF- BASE SPARES - EXHAUST GAS SYSTEMS 5657/13	1
53881400	THERMAL FUSE FUS-005	FOR SAMPLE PROBE ASSEMBLY NO 219300 FOR GAS TURBINE - OFF-BASE SPARES - EXHAUST GAS SYSTEM 5657/15	4
59284617	SOLENOID VALVE SOL-648	FOR OXYGEN ANALYSER TYPE SIGNAL MODEL 8000, DRG NO 219100 FOR GAS TURBINE - OFF-BASE SPARES - EXHAUST GAS SYSTEM 5657/10	1
59404159	COIL - OPEN Y2, Y3, CLOSE Y1	FOR SOLENOID VALVE 10525. NO PN 10540.	3
		FOR SF6 TYPE HEK2 GENERATOR CIRCUIT BREAKERS - SECTION 3385 GAS TURBINES OFF BASE SPARES - MEDIUM VOLTAGE SYSTEM 5663/1 & 2	
41511000	SWITCHING ELEMENT - GREY	(WITH ROLLER TO 12540 (S1)), NO PN 10624. FOR SF6 TYPE HEK2 GENERATOR CIRCUIT BREAKERS - SECTION 3385 GAS TURBINES OFF BASE SPARES - MEDIUM VOLTAGE SYSTEM 5663/3	2
41511018	SWITCHING ELEMENT - BLUE	(WITHOUT ROLLER TO 12540 (S1)), NO PN 10613 FOR SF6 HEK2 GENERATOR CIRCUIT BREAKERS - SECTION 3385 GAS TURBINES OFF BASE SPARES - MEDIUM VOLTAGE SYSTEM 5663/4	2
41511026	SWITCHING ELEMENT - GREY	(WITHOUT ROLLER TO 12540 (S1)) NO PN 10612 FOR SF6 TYPE HEK2 GENERATOR CIRCUIT BREAKERS - SECTION 3385 GAS TURBINES OFF BASE SPARES - MEDIUM VOLTAGE SYSTEM 5663/5	2
41511034	SWITCHING ELEMENT - BLUE	(WITH ROLLER TO 12540 (S1)), NO PN 10625. FOR SF6 TYPE HEK2 GENERATOR CIRCUIT BREAKERS - SECTION 3385 GAS TURBINES OFF BASE SPARES - MEDIUM VOLTAGE SYSTEM 5663/6	2

FRAME 9E OFF BASE GAS TURBINE SPARES

41511042	PRESSURE CONTROLLER F4(HE 1/2)	NO PN 10714. FOR SF6 TYPE HEK2 GENERATOR CIRCUIT BREAKERS - SECTION 3385 GAS TURBINES OFF BASE SPARES - MEDIUM VOLTAGE SYSTEM 5664/8	1
41511050	PRESSURE MONITOR F1 (HE 1/2)	NO PN 10711. FOR SF6 TYPE HEK2 GENERATOR CIRCUIT BREAKERS - SECTION 3385 GAS TURBINES OFF BASE SPARES - MEDIUM VOLTAGE SYSTEM 5664/9	1
41511069	PRESSURE MONITOR F2 (HE 1/2)	NO PN 10712. FOR SF6 TYPE HEK2 GENERATOR CIRCUIT BREAKERS GAS TURBINES OFF BASE SPARES - MEDIUM VOLTAGE SYSTEM 5664/10	1
41511077	HOSE CLAMP NO PN 10896	FOR SF6 TYPE HEK2 GENERATOR CIRCUIT BREAKERS - SECTION 3385 GAS TURBINES OFF BASE SPARES - MEDIUM VOLTAGE SYSTEM 5664/11	2
41511085	PRESSURE HOSE NO PN 10892	FOR SF6 TYPE HEK2 GENERATOR CIRCUIT BREAKERS - SECTION 3385 GAS TURBINES OFF BASE SPARES - MEDIUM VOLTAGE SYSTEM 5664/12	1
41511093	SIGHT GLASS - PANE HEK 1/2	NO PN 12711. FOR SF6 TYPE HEK2 GENERATOR CIRCUIT BREAKERS - SECTION 3385 GAS TURBINES OFF BASE SPARES - MEDIUM VOLTAGE SYSTEM 5664/13	1
41511107	SEALING CORD	8 METRE LENGTH, NO PN 10727. FOR SF6 TYPE HEK2 GENERATOR CIRCUIT BREAKERS - SECTION 3385 GAS TURBINES OFF BASE SPARES - MEDIUM VOLTAGE SYSTEM 5664/14	1
41511115	SEAL NO PN 12713	FOR SF6 TYPE HEK2 GENERATOR CIRCUIT BREAKERS - SECTION 3385 GAS TURBINES OFF BASE SPARES - MEDIUM VOLTAGE SYSTEM 5664/15	1
41511123	WASHER NO PN 12714	FOR SF6 TYPE HEK2 GENERATOR CIRCUIT BREAKERS - SECTION 3385 GAS TURBINES OFF BASE SPARES - MEDIUM VOLTAGE SYSTEM 5664/16	4

FRAME 9E OFF BASE GAS TURBINE SPARES

41511506	SCREWS, WASHERS & NUTS	NO PN 25701. FOR SF6 CIRCUIT BREAKER OPERATING MECHANISM TYPE HE GAS TURBINES OFF BASE SPARES - MEDIUM VOLTAGE SYSTEM 5665/18	1
41511514	SEALS SET NO PN 25702	FOR SF6 CIRCUIT BREAKER OPERATING MECHANISM TYPE HE. GAS TURBINES OFF BASE SPARES - MEDIUM VOLTAGE SYSTEMS 5665/19	1
59284625	SOLENOID VALVE TO Y1-Y2-Y3	NO 10525. FOR SF6 TYPE HEK2 GENERATOR CIRCUIT BREAKERS - SECTION 3385 GAS TURBINES OFF BASE SPARES - MEDIUM VOLTAGE SYSTEM 5664/7	1
53501101	E200 SELECTOR SWITCH	MODEL PR10-1102-A4EMB, NO 88203/126 FOR GEC INDUSTIRAL CONTROL ESSENTIAL SERVICES BOARD SERIAL NO TDY4961 TAG NO 01XC & 02XC GAS TURBINES OFF BASE SPARES - LOW VOLTAGE SYSTEM 5688/3	1
53501128	MAIN CONTACT SET MODEL 1795	FOR CONTACTOR 84041/012T FOR ESSENTIAL SERVICES BOARD SERIAL TDY 4961, TAG NO 01XC & 02XC. GAS TURBINES OFF BASE SPARES - LOW VOLTAGE SYSTEM 5689/8	1
53501136	COIL MODEL 1412 110V 50HZ	FOR CONTACTOR 84041/012T FOR ESSENTIAL SERVICES BOARD SERIAL TDY 4961, TAG NO 01XC & 02XC. GAS TURBINES OFF BASE SPARES - LOW VOLTAGE SYSTEM 5689/9	1
53501160	CMI 184 FUSESWITCH AUX	4 N/O, MODEL PC4191/8, NO 88203/001 FOR ESSENTIAL SERVICES BOARD SERIAL TDY 4961, TAG NO 01XC & 02XC. GAS TURBINES OFF BASE SPARES - LOW VOLTAGE SYSTEM 5690/14	1
53501179	FUSESWITCH AUX. SHROUD	NO 48Y-5094/01 FOR ESSENTIAL SERVICES BOARD SERIAL TDY 4961, TAG NO 01XC & 02XC. GAS TURBINES OFF BASE SPARES - LOW VOLTAGE SYSTEM 5690/15	1

FRAME 9E OFF BASE GAS TURBINE SPARES

53501195	FIXED CONTACT ASSEMBLY	NO P107218-20 FOR FUSES SWITCH 93249/104 FOR ESSENTIAL SERVICES BOARD SERIAL TDY 4961, TAG NO O1XC & O2XC. GAS TURBINES OFF BASE SPARES - LOW VOLTAGE SYSTEM 5690/18	1
53501209	MOVING CARRIAGE ASSY	NO P107285-40 FOR FUSES SWITCH 93119/104 FOR ESSENTIAL SERVICES BOARD SERIAL TDY 4961, TAG NO O1XC & O2XC. GAS TURBINES OFF BASE SPARES - LOW VOLTAGE SYSTEM 5690/19	1
53501217	FIXED CONTACT ASSY P107288-20	FOR FUSES SWITCH 93119/104 FOR ESSENTIAL SERVICES BOARD SERIAL TDY 4961, TAG NO O1XC & O2XC. GAS TURBINES OFF BASE SPARES - LOW VOLTAGE SYSTEM 5690/20	1
53501225	MOVING CARRIAGE ASSY	NO P107273-20 FOR FUSES SWITCH 93299/104 FOR ESSENTIAL SERVICES BOARD SERIAL TDY 4961, TAG NO O1XC & O2XC. GAS TURBINES OFF BASE SPARES - LOW VOLTAGE SYSTEM 5691/21	1
53250214	DC/DC CONVERTER 125V/50VDC	TYPE EC220 GAS TURBINES OFF BASE SPARES - POWER PROTECTION & CONTROL 5692/3	1
53894146	AUTO SEMAPHORE 24V DC SUBKLEW	TYPE (RED = CLOSED, GREEN = OPEN) REF SF24 FOR TEW MOSAIC MIMIC PANEL NO C5274-02-1 GAS TURBINES OFF BASE SPARES - POWER PROTECTION & CONTROL 5693/10	1
53894154	MANUAL SEMAPHORE SUBKLEW	TYPE 380072, NO C5274-02-1 ITEM 13 FOR TEW MOSAIC MIMIC PANEL GAS TURBINES OFF BASE SPARES - POWER PROTECTION & CONTROL 5693/11	1
53894162	C.B.DISCREPANCY CONTROL SWITCH	ENTRELEC E/EDM-0-L-651-6-D5, B8, B8, NO C5274-0201 ITEM 10 FOR TEW MOSAIC MIMIC PANEL GAS TURBINES OFF BASE SPARES - POWER PROTECTION & CONTROL 5694/12	1

FRAME 9E OFF BASE GAS TURBINE SPARES

53894170	C.B. DISCREPANCY INDICATOR	ENTRELEC E/EDM-0-L-102-2A1, NO C5274-02-1 ITEM 11 FOR TEW MOSAIC MIMIC PANEL GAS TURBINES OFF BASE SPARES - POWER PROTECTION & CONTROL 5694/13	1
53894189	4-20 MA M/C INSTRUMENT 240 DEG	SCALE, GEC METRIK REF 72MM, NO C5274-02-1 ITEM 15 FOR TEW MOSAIC MIMIC PANEL GAS TURBINES OFF BASE SPARES - POWER PROTECTION & CONTROL 5694/15	1
49240153	TRIP/CLOSE RELAY VAA110P	WTIH "HANDLE LOCK" PLUG IN RELAY CASES NO 2154 JA. GAS TURBINES OFF BASE SPARES - POWER PROTECTION & CONTROL 5694/17A	1
53500806	OUTPUT RELAY ITEM 10	GEC NO S11XCTP/254 POS 1M FOR ENERGY MANAGEMENT METERING PANEL GAS TURBINES OFF BASE SPARES - POWER PROT. & CONTROL 5697/33	1
53500814	INPUT ITEM 11	GEC NO S11XCTP/254 POS 7M. FOR ENERGY MANAGEMENT METERING PANEL GAS TURBINES OFF BASE SPARES - POWER PROT. & CONTROL 5697/34	1
53500822	COMMUNICATIONS ITEM 12	GEC NO S11XCTP/254 POS 13M. FOR ENERGY MANAGEMENT METERING PANEL GAS TURBINES OFF BASE SPARES - POWER PROT. & CONTROL 5697/35	1
53500830	I/O BUFFER ITEM 13	GEC NO S11XCTP/254 POS 19M. FOR ENERGY MANAGEMENT METERING PANEL GAS TURBINES OFF BASE SPARES - POWER PROT. & CONTROL 5697/36	1
53500849	CENTRAL PROCESSOR ITEM 14	GEC NO S11XCTP/254 POS 21M. FOR ENERGY MANAGEMENT METERING PANEL GAS TURBINES OFF BASE SPARES - POWER PROT. & CONTROL 5697/37	1

FRAME 9E OFF BASE GAS TURBINE SPARES

53500857	MEMORY	ITEM 15	GEC NO S11XCTP/254 POS 23M. FOR ENERGY MANAGEMENT METERING PANEL GAS TURBINES OFF BASE SPARES - POWER PROT. & CONTROL 5697/38	1
53500865	OPTO.U	ITEM 16	GEC NO S11XCTP/254 POS. FOR ENERGY MANAGEMENT METERING PANEL GAS TURBINES OFF BASE SPARES - POWER PROT. & CONTROL 5697/39	1
53500873	AUX. POWER SUPPLY	ITEM 17	GEC NO S11XCTP/254 POS 33M. FOR ENERGY MANAGEMENT METERING PANEL GAS TURBINES OFF BASE SPARES - POWER PROT. & CONTROL 5697/40	1
53500881	MAIN POWER SUPPLY	ITEM 18	GEC NO S11XCTP/254 POS 37M. FOR ENERGY MANAGEMENT METERING PANEL GAS TURBINES OFF BASE SPARES - POWER PROT. & CONTROL 5697/41	1
53500890	SCHRACK RELAY		GEC NO L9XZZAB 008/001,2,3. FOR ENERGY MANAGEMENT METERING PANEL GAS TURBINES OFF BASE SPARES - POWER PROT. & CONTROL 5697/42	1
53500903	FUSE FAILURE RELAY	ITEM 7	FOR ENERGY MANAGEMENT METERING PANEL GAS TURBINES OFF BASE SPARES - POWER PROT. & CONTROL 5697/43	1
53500911	FUSE FAILURE RELAY	ITEM 8	FOR ENERGY MANAGEMENT METERING PANEL GAS TURBINES OFF BASE SPARES - POWER PROT. & CONTROL 5697/44	1
53500954	MEGAWATT METER 0-150MW, 4-20MA INPUT		SERIAL NO. 34730B 4-20mA	2
			(GEC METRIC)	
			GAS TURBINE OFF BASE SPARES - REMOTE CONTROL DESK (SCR)	
53500962	NULL BALANCE INDICATOR		MODEL NO. CAL4D757ZZZ, SERIAL NO. 34376B, -500-0+500 MICRO AMPS.	1
			(BRUSH TYPE, GEC METRIC)	

FRAME 9E OFF BASE GAS TURBINE SPARES

		GAS TURBINE OFF BASE SPARES - REMOTE CONTROL DESK (SCR)	
30261546	DIODE - EXCITER RECTIFIER	WESTINGHOUSE TYPE R7SO.20.12. DRG AO3131846. REF 10 5700/12	4
63070014	TYPE 43 SEALOL MECHANICAL SEAL	NO J51427/32 FOR BARIC DEMIN WATER PUMP MODEL ME80-160 AND GENERAL SERVICE WATER PUMP MODELNO ME40 160 FOR GAS TURBINE - DEMIN WATER FORWARDING SKID 5702/5, 5701/1	2
63070022	CASING O-RING KIT NO J51427	FOR BARIC DEMIN WATER PUMP MODEL NO ME 80-160 FOR GAS TURBINE - DEMIN WATER FORWARDING SKID 5701/2	1
63070111	CASING O-RING KIT	BARIC REF - J51427 FOR BARIC GENERAL SERVICE WATER PUMP MODEL ME 40-160 FOR DEMIN. WATER FORWARDING SKID FOR GAS TURBINE - OFF-BASE SPARES - EXH. GAS SYSTEMS 5702/6	1
63070200	TYPE 43 SEALOL MECHANICAL SEAL	NO WPL 74 2D 310 FOR BARIC PUMP MODEL TYPE HC 50-32-250 NO J50816 GAS TURBINES OFF BASE SPARES - INLET AIR SYSTEMS - OFF LOAD COMPRESSOR WASH SKID 5711/14	1
63070219	IMPELLER NUT NO WPL742A4	FOR BARIC PUMP MODEL TYPE HC 50-32- 250 NO J50816 GAS TURBINES OFF BASE SPARES - INLET AIR SYSTEMS - OFF LOAD COMPRESSOR WASH SKID 5712/15	1
75350556	4" NB S.S. ELEMENT 40 MESH	FOR 'Y' SUCTION STRAINER SERIES 20 MODEL NO Y1002241UA/S20 FOR GAS TURBINE - EXHAUST GAS SYSTEM 5702/9	1
75350564	2" NB S.S. ELEMENT 40 MESH	FOR 'Y' SUCTION STRAINER SERIES 20 MODEL NO Y1002241UA/S20 FOR GAS TURBINE - EXHAUST GAS SYSTEM 5702/10	1
75350602	S.S.1/16"MESH STRAINER ELEMENT	FOR 150NB CAST IRON 'Y' STRAINER MODEL NO Y150-32-12YA FOR GAS TURBINE - OFF-BASE SPARES - COOLING SYSTEMS 5705/13	1

FRAME 9E OFF BASE GAS TURBINE SPARES

34350390	FAN VIBRATION SWITCH	MODEL NO 3171 D.P.C.O. FOR G.T. & GENERATOR FIN FAN COOLING FOR GAS TURBINE - OFF-BASE SPARES - COOLING SYSTEMS 5704/6 & 5706/18	1
34350403	FAN TEMPERATURE SWITCH	DANFOSS MODEL NO RT 106, 5M CAPILLARY. RANGE SET AT 30 DEG. C (FALLING), DIFF. SET AT NO 10 (DIFF TEMP. 20 DEG. C) DRG PT NO 17-5050	1
		FOR G.T. FIN FAN COOLING GAS TURBINE OFF-BASE SPARES - COOLING SYSTEMS 5703/3 & 4	
34350411	LEVEL SWITCH	FOR LOW LEVEL ALARM MODEL NO S36/D A F84, SERIAL NO 9007 FOR G.T. FIN FAN COOLING FOR GAS TURBINE - OFF-BASE SPARES - COOLING SYSTEMS 5704/5 & 5706/17	1
34350420	PRESSURE SWITCH	TYPE 9012 - GAWM 26 - Q4. RANGE 0.35 TO 17 BARG. SET POINT 4.1 BARG (FALLING) FOR G.T. FIN FAN COOLING FOR GAS TURBINE - OFF-BASE SPARES - COOLING SYSTEMS 5705/14	1
63450216	BURGMANN MECH SEAL SIZE 38MM	NO 9417806 FOR SPP UNISTREAM NO 80/20 PUMP FOR GAS TURBINE - FIN FAN COOLING 5705/11 & 5707/23	1
63450224	IMPELLER RETAINING NUT	FOR SPP UNISTREAM NO 80/20 PUMP FOR GAS TURBINE - FIN FAN COOLING 5705/12	1
75350629	S.S.1/16"MESH STRAINER ELEMENT	FOR 200NB CAST IRON 'Y' STRAINER NO Y200-32-12-YA FOR GAS TURBINE - OFF-BASE SPARES - COOLING SYSTEMS 5707/24	1
34451005	FLOW INDICATOR MICRO SWITCH	TYPE FML3033/CIK/LP/3EE(3EE)/1CS/48F10/53/D1(D2) SERIAL NOS 90/7/162 & 9/7/163 FOR GENERATOR COOLING SYSTEM FLOW INDICATOR FOR GAS TURBINE - OFF-BASE SPARES - COOLING SYSTEMS 5708/26	1
53841000	ALARM RELAY REF 100113	NO 100230/12 FOR OIL DETECTOR TYPE OCD 34 FOR GAS TURBINE - OFF-BASE SPARES - COOLING SYSTEMS 5708/29	2

FRAME 9E OFF BASE GAS TURBINE SPARES

53841018	OVERPRESSURE PLUG REF 100009	NO 100391/17 FOR OIL DETECTOR TYPE OCD 34 FOR GAS TURBINE - OFF-BASE SPARES - COOLING SYSTEMS 5708/30	1
53841026	GLASS TUBE REF 100130	NO 100391/16 FOR OIL DETECTOR TYPE OCD 34 FOR GAS TURBINE - OFF-BASE SPARES - COOLING SYSTEMS 5708/31	1
53841034	O-RING - 214 REF 100138	NO 100391/21 FOR OIL DETECTOR TYPE OCD 34 FOR GAS TURBINE - OFF-BASE SPARES - COOLING SYSTEMS 5708/32	1
53841042	O-RING - 218 REF 100139	NO 100391/22 FOR OIL DETECTOR TYPE OCD 34 FOR GAS TURBINE - OFF-BASE SPARES - COOLING SYSTEMS 5708/33	1
34350489	DIFFERENTIAL PRESSURE SWITCH	MODEL W310 00 C2D2, IP65, AC/DC RATED, SPCO MICROSWITCH, STANDARD W/PROOF HSG.RANGE 0-15 MBAR, MAX STATIC 0.5 BAR, SET POINT 120MM W.G. (RISING) CABLE ENTRY 20MM, PIPE 1/4" BSP. FOR GAS TURBINE - OFF-BASE SPARES - AIR INLET SYSTEM 5710/7	1
34365311	DIFF PRESS GAUGE 0 TO 50MM WG	MAGNEHELIC, 1/8" NPT CONNECTIONS, AMBIENT TEMPERATURE RANGE 20 TO 140 DEG F REF 2000-50MM. GAS TURBINES OFF BASE SPARES - AIR INLET SYSTEM 5710/9	1
34365320	DIFF PRESS GAUGE 0 TO 100MM WG	MAGNEHELIC, 1/8" NPT CONNECTIONS, AMBIENT TEMPERATURE RANGE 20 TO 140 DEG F REF 2000 - 100MM GAS TURBINES OFF BASE SPARES - AIR INLET SYSTEM 5710/10	1
34365338	DIFF PRESS GAUGE 0 TO 15CM WG	MAGNEHELIC, 1/8" NPT CONNECTIONS, AMBIENT TEMPERATURE RANGE 20 TO 140 DEG F REF 2000-15CM GAS TURBINES OFF BASE SPARES - INLET AIR SYSTEMS 5711/11	1
75350645	S.S 40 MESH SCREEN ELEMENT	TO GRADE ANSI 150 FOR 2 1/2"NB 'Y' TYPE STRAINER SERIES 20 MODEL NO Y0653341 UA FOR GAS TURBINE - OFF-BASE SPARES - INLET AIR SYSTEMS 5712/18	1

FRAME 9E OFF BASE GAS TURBINE SPARES

12612723	THERMOSTAT SJA -25 TO 95 DEG C	FOR HF 03606/60 IMMERSION HEATER 5713/20	2
12612731	THERMOSTAT SJH 45-195 DEG C	CUT-OUT TYPE FOR HF 03606/60 IMMERSION HEATER 5713/21	1
45070326	OIL SEAL - D.E.	FOR MOTOR NO. ADF 132 SAH, B894860, 4KW, 8.1A, 2900 RPM, 415V AC CLASS F, RATING C, IP55 BROOKS CROMPTON REF. (40/52/7) FOR DIST. FUEL TRANSFER PUMP & COALESCER SKID FOR GAS TURBINE - OFF-BASE SPARES - DIST. FUEL SYSTEM 5715/5	5
45070334	OIL SEAL - N.D.E.	BROOKS CROMPTON REF. M25 (25 X 35 X 7) FOR MOTOR NO. ADF 132 SAH, B894860, 4KW, 8.1A, 2900 RPM, 415V AC CLASS F, RATING C, IP55 FOR DIST. FUEL OIL TRANSFER PUMP & COALESCER SKID FOR GAS TURBINE - OFF-BASE SPARES - DIST. FUEL SYSTEM 5715/6	5
63150107	MECHANICAL SEAL NO 45222-788	ITEM 30 FOR GILKES 1 1/2" - 156 CENTRIFUGAL PUMP FOR GAS TURBINE - DIST. FUEL OIL TRANSFER PUMP & COALESCER SKID 5715/7	1
75350807	FILTER ELEMENT CARTRIDGE	NO B6352849 FOR DISTILLATE FUEL OIL TRANSFER PUMP & COALESCER SKID SERIAL NO 67615 FOR GAS TURBINE - OFF-BASE SPARES 5720/17, 5715/8	52
59481200	VALVE SEAT NO 0110-2464	FOR DIFF.PRESS. CONTROL V/V, SAMSON TYPE 2422 2046-00, NO 218325, KVS32, DN50, PN40, DELTA P 25,T 350 DEG C, GS-C25 DIST. FUEL OIL TRANSFER PUMP & COALESCER SKID GAS TURBINE - OFF-BASE SPARES 5716/10	2
59481218	VALVE PLUG NO 0220-7014	FOR DIFF. PRESS.CONTROL V/V, SAMSON TYPE 2422 2046-00 NO 218325, KVS 32, DN 50, PN 40, DELTA P 25, T350 DEG C, GS-C25 DIST. FUEL OIL TRANSFER PUMP & COALESCER SKID GAS TURBINE - OFF-BASE SPARES 5716/11	2

FRAME 9E OFF BASE GAS TURBINE SPARES

59481226	VALVE BUSH NO 0310-1079	FOR DIFF. PRESS.CONTROL V/V SAMSON TYPE 2422 2046-00 NO 218325, KVS 32, DN 50, PN 40, DELTA P 25, T350 DEG C, GS-C25 DIST. FUEL OIL TRANSFER PUMP & COALESCER SKID GAS TURBINE - OFF- BASE SPARES 5716/12	2
59481234	VALVE BELLOWS NO 1190-0957	FOR DIFF. PRESS. CONTROL V/V SAMSON TYPE 2422 2046-00 NO 218325, KVS 32, DN 50, PN 40, DELTA P 25, T350 DEG C, GS-C25 DIST. FUEL OIL TRANSFER PUMP & COALESCER SKID FOR GAS TURBINE - OFF- BASE SPARES 5716/13	2
59481242	VALVE GASKET NO 8422-0061	FOR DIFF. PRESS. CONTROL V/V SAMSON TYPE 2422 2046-00 NO 218325, KVS 32, DN 50, PN 40, DELTA P 25, T350 DEG C, GS-C25 DIST. FUEL OIL TRANSFER PUMP & COALESCER SKID FOR GAS TURBINE - OFF- BASE SPARES 5716/14	4
59481269	DIAPHRAGM NO 0520-0852	FOR DIFF. PRESS. CONTROL V/V ACTUATOR TYPE 2425 2045-00 NO 9110, KVS 160, PN 40, DN15-100, 1 - 2.5 BAR, FKM DIST. FUEL OIL TRANSFER PUMP & COALESCER SKID FOR GAS TURBINE - OFF- BASE SPARES 5716/15	1
59481277	DISC	FOR DIFF. PRESS. CONTROL V/V ACTUATOR TYPE 2425 2045-00 NO 9110, KVS 160, PN 40, DN15-100, 1-2.5 BAR, FKM DIST. FUEL OIL TRANSFER PUMP & COALESCER SKID GAS TURBINE - OFF- BASE SPARES 5716/16	1
79481019	NITRILE RUBBER O-RING	FOR FLUID & GAS SEAL FOR TYPE 3730A- 57-051, SIZE 37 & TYPE 2830A 57051 ACCUMULATORS FOR GAS TURBINE - DIST.FUEL SYSTEM 5718/8A 5717/1A	1

FRAME 9E OFF BASE GAS TURBINE SPARES

75350823	FILTER ELEMENT NO 636000	FOR VOKES DUPLEX FILTER MODEL TD 54 CTJ200 DRG A6362015 FOR GAS TURBINE - OFF BASE SPARES - DIST. FUEL SYSTEM 5718/6	16
75350831	VALVE FLANGE O-RING D6351798	FOR VOKES FILTER MODEL TD 54CTJ200 DRG A6362015 FOR GAS TURBINE - OFF-BASE SPARES - DIST. FUEL SYSTEM 5718/7	4
75350858	STRIPPER ELEMENT NO B6361525	FOR COALESCER TYPE 369-2, PT NO B6361525 FOR FUEL OIL FORWARDING FILTER COALESCER TYPE 369-2 FOR GAS TURBINE - OFF-BASE SPARES - DIST. FUEL SYSTEM 5720/18	4
75350866	COVER JOINT O-RING NO D6351866	FOR VOKES FILTER MODEL TD 54 CTJ 200 DRAWING A6362015 FOR GAS TURBINE - OFF BASE SPARES - DIST. FUEL SYSTEM 5718/ 6A	2
75350874	VALVE SHAFT O-RING NO D6351773	FOR VOKES DUPLEX FILTER MODEL TD 54 CTJ 200 DRAWING A6362015 FOR GAS TURBINE - OFF BASE SPARES - DIST FUEL SYSTEM 5718/7A	3
59671734	SERVICE KIT	FOR EMERGENCY SHUTDOWN VALVE REF 5152W-31-2236 TF-A, WCB 19 FOR FILTERING & METERING SKID SECTION FOR GAS TURBINE - OFF-BASE SPARES - DIST. FUEL SYSTEM 5718/10	1
59692340	CYLINDER SERVICE KIT	FOR VALVE ACTUATOR - HYTORK 680 FOR FUEL GAS "Y" STRAINER - FUEL GAS ESV - 8" NB/ EMERGENCY SHUT DOWN VALVE & FILTERING & METERING SKID SECTION 5729/6 FOR GAS TURBINE - OFF-BASE SPARES - GAS & DIST.FUEL SYSTEMS 5718/10A, 5722/4A	2
59656158	SPARES KIT	FOR MAXSEAL SOLENOID VALVE SERIAL WC 52185, 24V DC, ATS, SERIES IC04 FOR FILTERING & METERING SKID SECTION FOR GAS TURBINE - OFF-BASE SPARES - DIST. FUEL SYSTEM 5718/10B	1

FRAME 9E OFF BASE GAS TURBINE SPARES

59481285	DIAPHRAGM NO 0520-0869	FOR SAMSON TYPE ACTUATOR 2413 0023-01 NO 9031, WF80, PN10, 2-5 BAR, FKM FILTERING & METERING SKID SECTION GAS TURBINE - OFF-BASE SPARES - DIST FUEL SYSTEM 5719/12A	1
59481293	DIAPHRAGM NO 0620-0944	FOR SAMSON TYPE ACTUATOR 2413 0021-01 NO 9060, KVS40, PN16, 4.5-10 BAR, FKM FUEL OIL PRESSURE CONTROL SYSTEM FOR GAS TURBINE - OFF-BASE SPARES - DIST. FUEL SYSTEM 5719/17	1
59481315	VALVE SEAT NO 0110-2467	FOR PRESS. CONTROL V/V SAMSON TYPE 2412 1229-00 NO 9110, KVS80, 2F4400N, 80 BAR, PN40, DELTA P20, 350 DEG C, 66-C25 FILTERING & METERING SKID SECTION GAS TURBINE - OFF-BASE SPARES - DIST. FUEL SYSTEM 5719/11A	1
59481323	VALVE PLUG NO 0220-3951	FOR PRESS. CONTROL V/V SAMSON TYPE 2412 1229-00 NO 9110, KVS 80, 2 F4400N, 80 BAR, PN40, DELTA P20, 350 DEG C, 66-C25 FILTERING & METERING SKID SECTION GAS TURBINE - OFF-BASE SPARES - DIST. FUEL SYSTEM 5719/11B	1
59481331	VALVE BUSH NO 0310-1080	FOR PRESS. CONTROL V/V SAMSON TYPE 2412 1229-00 NO 9110, KVS80, 2 F4400N, 80 BAR, PN40, DELTA P20, 350 DEG C, 66-C25 FILTERING & METERING SKID SECTION GAS TURBINE - OFF-BASE SPARES - DIST. FUEL SYSTEM 5719/11C	1
59481340	VALVE BELLOWS NO 1190-3535	FOR PRESS CONTROL V/V SAMSON TYPE 2417 4826-02 NO 218363, KVS32, F4400N, DN50, PN40, DELTA P25, T 220 DEG C, GS-C25 FUEL OIL PRESSURE CONTROL SYSTEM GAS TURBINE - OFF-BASE SPARES - DIST. FUEL SYSTEM 5719/16	1

FRAME 9E OFF BASE GAS TURBINE SPARES

59481412	VALVE THERMOSTAT	FOR STEAM CONTROL VALVE TYPE SAMSON 2231000501 - 9050 150 DN, "KORREKTUR" MODEL. RANGE -20 DEG C TO + 80 DEG C. CAPILLARY LENGTH: 1M IN STAINLESS STEEL DIST FUEL OIL IN LINE STEAM HEATER GAS TURBINE - OFF-BASE SPARES - DIST. FUEL SYSTEM 5721/26	1
34350497	FLOAT SWITCH	MODEL 501D/F8B, SERIAL NOS 9011 ETC. FOR FUEL OIL FORWARDING FILTER COALESCER SKID FOR GAS TURBINE - OFF-BASE SPARES - DIST. FUEL SYSTEM 5716/17 & 5720/19	1
75350505	316 S.S. STRAINER SCREEN, 2MM	MESH NO F1721/003 FOR BARTON HYDRAULIC 8" NB FUEL GAS 'YY STRAINER NO F2404/00 FOR GAS TURBINE - OFF BASE SPARES 5722/1	1
59671742	SERVICE KIT FOR TYPE 5406 SN-71, 2236TS - 1A VAL	PTFE 50, WCB50 FOR FUEL GAS "Y" STRAINER - FUEL GAS ESV - 8" NB FOR GAS TURBINE - OFF-BASE SPARES - GAS FUEL SYSTEM 5722/2	1
59692340	CYLINDER SERVICE KIT	FOR VALVE ACTUATOR - HYTORK 680 FOR FUEL GAS "Y" STRAINER - FUEL GAS ESV - 8" NB/ EMERGENCY SHUT DOWN VALVE & FILTERING & METERING SKID SECTION 5729/6 FOR GAS TURBINE - OFF-BASE SPARES - GAS & DIST.FUEL SYSTEMS 5718/10A, 5722/4A	2
53850505	E AMPLIFIER BOARD (4-20MA)	NO 01151-0137-0007 FOR ROSEMOUNT PRESSURE TRANSMITTER FOR BOILER - GAS MASS FLOW 5723/5,5464/1	2
53850513	E CALIBRATION BOARD	NO 0151-0139-0004 FOR ROSEMOUNT PRESSURE TRANSMITTER FOR BOILER - GAS MASS FLOW 5723/6,5464/2	2
34890190	THERMOCOUPLE NO 14013-TB	TYPE K CHRO/ALU 0/800 DEG C. LENGTH 317MM X 6MM DIA GAS TURBINES OFF BASE SPARES - GAS FUEL SYSTEM 5723/7	1

FRAME 9E OFF BASE GAS TURBINE SPARES

59620412	8" BALL VALVE REPAIR KIT	TYPE JC, RED, CLASS 300, BODY WCB, BALL 18.10.2, SEAT PTFE, BS5351. TO INCLUDE SEAT PTFE + FV, GLAND PACKING - GRAFOIL, STEM GASKET PTFE, INSERT GASKET - GRAFOIL, "O" RING FKM VITON, UPPER STEM GASKET PTFE. GAS TURBINES OFF BASE SPARES - STATION VALVES 5725/6A	1
59620315	4" BALL VALVE REPAIR KIT	TYPE JC, RED, CLASS 300, BODY WCB, BALL 18.10.2. SEAT PTFE, BS 5351. TO INCLUDE SEAT PTFE + FV , GLAND PACKING - GRAFOIL, STEM GASKET PTFE, INSERT GASKET - GRAFOIL, "O" RING FLM VITON, UPPER STEM GASKET PTFE. GAS TURBINES OFF BASE SPARES - STATION VALVES 5726/12A	1
59620218	2" BALL VALVE REPAIR KIT	TYPE JC, BODY WCB, BALL 18.10.2. SEAT PTFE, BS 5351. TO INCLUDE SEAT PTFE + FE, PACKING - GRAFOIL, STEM GASKET PTFE, INSERT GASKET - GRAFOIL, "O" RING FKM VITON, STEM GASKET PTFE. GAS TURBINES OFF BASE SPARES - STATION VALVES 5727/18A	1
59620013	3/4" BALL VALVE REPAIR KIT	TYPE JC, CLASS 300, BODY WCB, BALL 18.10.2. SEAT PTFE, BS 5351. TO INCLUDE SEAT RING PTFE, GLAND PACKING - GRAFOIL, STEM THRUST SEAL PTFE, BODY CONNECTOR SEAL "GRAFOIL", THRUST WASHER PTFE. GAS TURBINES OFF BASE SPARES - STATION VALVES 5728/24A	1
59620110	1" BALL VALVE REPAIR KIT	TYPE JC, RED, CLASS 300, BODY WCB, BALL 18.10.2. SEAT PTFE, BS 5351. TO INCLUDE SEAT, PACKING, STEM GASKET, INSERT GASKET, "O" RING, UPPER STEM GASKET. GAS TURBINES OFF BASE SPARES - STATION VALVES 5728/29A	1

FRAME 9E OFF BASE GAS TURBINE SPARES

59304197	20MM BALL VALVE	TYPE JC, FIG 530, 30016, WCB. GAS TURBINES OFF BASE SPARES - STATION VALVES 5727/24B	4
59671750	STANDARD SERVICE KIT	FOR 6" NELES JAMESBURY VALVE, CLASS 150, SERIES 5152. REF 51625-31-2236TF. COMPRISES: SEAT RING, BODY GASKET, THRUST SEAL, GLAND NUT AND GLAND PACKING FOR EMERGENCY SHUT-DOWN VALVE FOR GAS TURBINE - OFF-BASE SPARES - DIST. FUEL SYSTEM 5729/1	1
71174001	CYLINDER HEAD GASKET	FOR LEVISS TYPE S10 AIR COMPRESSOR, 6.3 SCFM, 7 BAR FOR GAS TURBINE - OFF-BASE SPARES - FIRE FIGHTING SYSTEM 5730/1	3
71174028	BEARING HOUSING JOINT	FOR LEVISS TYPE S10 AIR COMPRESSOR, 6.3 SCFM, 7 BAR FOR GAS TURBINE - OFF-BASE SPARES - FIRE FIGHTING SYSTEM 5730/3	1
71174036	BEARING HOUSING COVER JOINT	FOR LEVISS TYPE S10 AIR COMPRESSOR, 6.3 SCFM, 7 BAR FOR GAS TURBINE - OFF-BASE SPARES - FIRE FIGHTING SYSTEM 5730/4	1
71174044	SUCTION VALVE SPRING	FOR LEVISS TYPE S10 AIR COMPRESSOR, 6.3 SCFM, 7 BAR FOR GAS TURBINE - OFF-BASE SPARES - FIRE FIGHTING SYSTEM 5730/5	2
71174060	SUCTION VALVE CIRCLIP	FOR LEVISS TYPE S10 AIR COMPRESSOR, 6.3 SCFM, 7 BAR FOR GAS TURBINE - OFF-BASE SPARES - FIRE FIGHTING SYSTEM 5730/7	2
71174095	VALVE PLATE	FOR LEVISS TYPE S10 AIR COMPRESSOR, 6.3 SCFM, 7 BAR FOR GAS TURBINE - OFF-BASE SPARES - FIRE FIGHTING SYSTEM 5730/10	1
71174109	PISTON COMPRESSION RING	FOR LEVISS TYPE S10 AIR COMPRESSOR, 6.3 SCFM, 7 BAR FOR GAS TURBINE - OFF-BASE SPARES - FIRE FIGHTING SYSTEM 5731/11	1

FRAME 9E OFF BASE GAS TURBINE SPARES

71174117	PISTON SCRAPER RING	FOR LEVISS TYPE S10 AIR COMPRESSOR, 6.3 SCFM, 7 BAR FOR GAS TURBINE - OFF-BASE SPARES - FIRE FIGHTING SYSTEM 5731/12	4
71174125	CRANKSHAFT BEARING	FOR LEVISS TYPE S10 AIR COMPRESSOR, 6.3 SCFM, 7 BAR FOR GAS TURBINE - OFF-BASE SPARES - FIRE FIGHTING SYSTEM 5731/13	2
71174133	CONNECTING ROD BEARING	FOR LEVISS TYPE S10 AIR COMPRESSOR, 6.3 SCFM, 7 BAR FOR GAS TURBINE - OFF-BASE SPARES - FIRE FIGHTING SYSTEM 5731/14	2
71174150	AFTERCOOLER WASHER	FOR LEVISS TYPE S10 AIR COMPRESSOR, 6.3 SCFM, 7 BAR FOR GAS TURBINE - OFF-BASE SPARES - FIRE FIGHTING SYSTEM 5731/16	4
59791055	SPARES KIT NO 03091	FOR WORMALD BUTTERFLY DELUGE VALVE BODY, SIZE 100 NB, MODEL FE 2333 (1989) GAS TURBINES OFF BASE SPARES - FIRE FIGHTING SYSTEM 5734/38A	2
59791101	SPARES KIT NO 03090	FOR 80 NB WORMALD BUTTERFLY VALVE, MODELS FE2408 (1989) DELUGE & FE2394 ALARM GAS TURBINES OFF BASE SPARES - FIRE FIGHTING SYSTEM 5734/42A & 5735/46A	1
67677002	FUEL FILTER ELEMENT	NO FS 1226 FOR CUMMINS FIRE PUMP DIESEL ENGINE TYPE 6 CTA 8.3G FOR GAS TURBINE - OFF-BASE SPARES - FIRE FIGHTING SYSTEM 5733/28	4
67677010	OIL FILTER ELEMENT	NO LF 734 FOR CUMMINS FIRE PUMP DIESEL ENGINE TYPE 6 CTA 8.3 G FOR GAS TURBINE - OFF-BASE SPARES - FIRE FIGHTING SYSTEM 5733/29	4
67677029	AIR FILTER ELEMENT	NO AF 1811 FOR CUMMINS FIRE PUMP DIESEL ENGINE TYPE 6 CTA 8.3 G FOR GAS TURBINE - OFF-BASE SPARES - FIRE FIGHTING SYSTEM 5733/31	3

FRAME 9E OFF BASE GAS TURBINE SPARES

67677037	FAN BELT	NO 3911571 FOR CUMMINS FIRE PUMP DIESEL ENGINE TYPE 6 CTA 8.3 G FOR GAS TURBINE - OFF-BASE SPARES - FIRE FIGHTING SYSTEM 5733/32	5
67677045	ROCKER COVER GASKET	NO 3905449 FOR CUMMINS FIRE PUMP DIESEL ENGINE TYPE 6 CTA 8.3 G FOR GAS TURBINE - OFF-BASE SPARES - FIRE FIGHTING SYSTEM 5733/33	1
67677053	TOP GASKET SET	NO 3802086 FOR CUMMINS DIESEL FIRE PUMP ENGINES GAS TURBINES OFF BASE SPARES - FIRE FIGHTING SYSTEMS 5733/30A	2
67677061	BOTTOM GASKET SET	NO 3802087 FOR CUMMINS DIESEL FIRE PUMP ENGINES GAS TURBINES OFF BASE SPARES - FIRE FIGHTING SYSTEMS 5733/31A	2
67677070	INJECTOR	BOSCH 643 KBAL-105-P-18, 205 BAR. 937. FOR CUMMINS DIESEL FIRE PUMP ENGINES GAS TURBINES OFF BASE SPARES - FIRE FIGHTING SYSTEM 5733/33A	4
67677088	RING GEAR	ISR 5733/29A	2
59791004	SPARES KIT NO 03093	FOR WORMALD BUTTERFLY DELUGE VALVE BODY, SIZE 200 NB, MODEL FE 2370 (1989) GAS TURBINES OFF BASE SPARES - FIRE FIGHTING SYSTEM 5733/34A	2
59791055	SPARES KIT NO 03091	FOR WORMALD BUTTERFLY DELUGE VALVE BODY, SIZE 100 NB, MODEL FE 2333 (1989) GAS TURBINES OFF BASE SPARES - FIRE FIGHTING SYSTEM 5734/38A	2
59791101	SPARES KIT NO 03090	FOR 80 NB WORMALD BUTTERFLY VALVE, MODELS FE2408 (1989) DELUGE & FE2394 ALARM GAS TURBINES OFF BASE SPARES - FIRE FIGHTING SYSTEM 5734/42A & 5735/46A	1
59791152	DIAPHRAGM	FOR WORMALD FIRE PROTECTION DELUGE VALVE GEM PILOT ACTUATOR FOR GAS TURBINE - OFF-BASE SPARES - FIRE FIGHTING SYSTEM 5735/47	1

FRAME 9E OFF BASE GAS TURBINE SPARES

59791160	SPARES KIT NO 922801012	FOR WORMALD FIRE PROTECTION DELUGE VALVE GEM PILOT ACTUATOR FOR GAS TURBINE - OFF-BASE SPARES - FIRE FIGHTING SYSTEM 5735/48	1
34225005	IONISATION SMOKE DETECTOR, XP95	FOR GAS TURBINE - OFF-BASE SPARES - FIRE FIGHTING SYSTEMS	1
34225021	HEAT DETECTOR GRADE 1	APOLLO SERIES 30, NO 53531-221 FOR GAS TURBINE - OFF-BASE SPARES - FIRE FIGHTING SYSTEM 5735/51	1
34225030	REMOTE INDICATOR	APOLLO NO 53832-061 FOR GAS TURBINE - OFF-BASE SPARES - FIRE FIGHTING SYSTEM 5735/53	1
34840290	PRESSURE SWITCH 1.4 TO 12 BAR	SQUARE D TYPE ACW8, CLASS 9012 FOR GAS TURBINE - OFF-BASE SPARES - FIRE FIGHTING SYSTEM 5736/56	1
34840303	PRESSURE SWITCH 0.1 TO 7.5 BAR	SQUARE D TYPE ACW1, CLASS 9012 FOR GAS TURBINE - OFF-BASE SPARES - FIRE FIGHTING SYSTEM 5736/57	1
34320571	REPLACEMENT GLASS	FOR WORMALD BREAK GLASS UNIT KAC TYPE KG1 FOR GAS TURBINE - OFF-BASE SPARES - FIRE FIGHTING SYSTEM 5736/59A	25
59731001	NEOPRENE DISC	FOR PETER SMITH BALL FLOAT VALVE FIG. 501, SIZE 100 MM FOR FIRE FIGHTING HEAD TANK NO C3120 FOR GAS TURBINE - OFF-BASE SPARES 5737/60	1
59731010	NEOPRENE PISTON SEAL	FOR PETER SMITH BALL FLOAT VALVE FIG. 501, SIZE 100 MM FOR FIRE FIGHTING HEAD TANK NO C3120 FOR GAS TURBINE - OFF-BASE SPARES 5737/61	1
59731028	GASKET	FOR PETER SMITH BALL FLOAT VALVE FIG. 501, SIZE 100 MM FOR FIRE FIGHTING HEAD TANK NO C3120 FOR GAS TURBINE - OFF-BASE SPARES 5737/62	1

FRAME 9E OFF BASE GAS TURBINE SPARES

59692413	PISTON WASHER NO B1168-13	FOR PEGLER LTD BALL FLOAT VALVE NO B1167, SIZE 40MM FOR FIRE FIGHTING HEAD TANK NO C3120 FOR GAS TURBINE - OFF-BASE SPARES - FIRE FIGHTING SYSTEM 5737/63	1
53960017	ZONE MODULE	FOR WORMALD FIRE ALARM & CONTROL PANEL NO CT903047-E-5 FOR GAS TURBINE - CONTROL ROOM - FIRE FIGHTING SYSTEMS 5739/78	1
53960025	COMMON EQUIPMENT MODULE	FOR WORMALD FIRE ALARM & CONTROL PANEL NO CT903047-E-5 FOR GAS TURBINE - CONTROL ROOM - FIRE FIGHTING SYSTEM 5739/79	1
53960033	SUPERVISOR OUTPUT MODULE	PT NO 2305 FOR WORMALD FIRE ALARM & CONTROL PANEL NO CT903047-E-5 FOR GAS TURBINE - CONTROL ROOM - FIRE FIGHTING SYSTEM 5739/80	1
53960041	VOTER MODULE	FOR WORMALD FIRE ALARM & CONTROL PANEL NO CT903047-E-5 FOR GAS TURBINE - CONTROL ROOM - FIRE FIGHTING SYSTEM 5739/81	1
53960050	CIRCUIT BREAKER S28 2K3	FOR WORMALD FIRE ALARM & CONTROL PANEL NO CT903047-E-5 FOR GAS TURBINE - CONTROL ROOM - FIRE FIGHTING SYSTEM 5739/82	1
53960068	CIRCUIT BREAKER S28 2K6	FOR WORMALD FIRE ALARM & CONTROL PANEL NO CT903047-E-5 FOR GAS TURBINE - CONTROL ROOM - FIRE FIGHTING SYSTEMS 5739/83	1
53960076	CIRCUIT BREAKER S28 2K10	FOR WORMALD FIRE ALARM & CONTROL PANEL NO CT903047-E-5 FOR GAS TURBINE - CONTROL ROOM - FIRE FIGHTING SYSTEM 5739/84	1
53960084	CIRCUIT BREAKER S28 2K16	FOR WORMALD FIRE ALARM & CONTROL PANEL NO CT903047-E-5 FOR GAS TURBINE - CONTROL ROOM - FIRE FIGHTING SYSTEM 5739/85	1
53960092	CIRCUIT BREAKER S28 2K40	FOR WORMALD FIRE ALARM & CONTROL PANEL NO CT903047-E-5 FOR GAS TURBINE - CONTROL ROOM - FIRE FIGHTING SYSTEM 5739/86	1

FRAME 9E OFF BASE GAS TURBINE SPARES

53960106	AUXILIARY CONTACT S2 - H11	FOR WORMALD FIRE ALARM & CONTROL PANEL NO CT903047-E-5 FOR GAS TURBINE - CONTROL ROOM - FIRE FIGHTING SYSTEM 5740/87	1
53960114	DIODE PACK	FOR WORMALD FIRE ALARM & CONTROL PANEL NO CT903047-E-5 FOR GAS TURBINE - CONTROL ROOM - FIRE FIGHTING SYSTEM 5740/88	1
53960122	24VDC 4 POLE RELAY	FOR WORMALD FIRE ALARM & CONTROL PANEL NO CT903047-E-5 FOR GAS TURBINE - CONTROL ROOM - FIRE FIGHTING SYSTEM 5740/89	6
53960130	RELAY BASE	FOR WORMALD FIRE ALARM & CONTROL PANEL NO CT903047-E-5 FOR GAS TURBINE - CONTROL ROOM - FIRE FIGHTING SYSTEM 5740/90	6
53960149	RELAY CLIP	FOR WORMALD FIRE ALARM & CONTROL PANEL NO CT903047-E-5 FOR GAS TURBINE - CONTROL ROOM - FIRE FIGHTING SYSTEM 5740/91	6
53960157	LAMBDA REGULATED POWER SUPPLY	LFS-47-24 FOR WORMALD FIRE ALARM & CONTROL PANEL NO CT903047-E-5 FOR GAS TURBINE - CONTROL ROOM - FIRE FIGHTING SYSTEM 5740/92	1
53960165	110V AC RELAY OMRON MK3PI	NO RL1 FOR WORMALD JOCKEY PUMP STARTER PANEL NO CT903047-E-37 & DETECTION AIR COMPRESSOR PANEL NO CT903047-E-39 GAS TURBINES OFF BASE SPARES - FIRE FIGHTING SYSTEMS 5738/75,5738/69	1
53960173	WATFORD CONTACTOR TYPE 63000-1	NO CON 1 FOR WORMALD JOCKEY PUMP STARTER PANEL NO CT903047-E-37 GAS TURBINES OFF BASE SPARES - FIRE FIGHTING SYSTEMS 5738/76, 5738/70	2
63450151	ALARM PCB FOR SPP FIRE PUMP	PT NO PSE 1055 GAS TURBINES/FIRE-FIGHTING SYSTEMS 5740/94	1

FRAME 9E OFF BASE GAS TURBINE SPARES

59529920	VALVE SPINDLE PACKING	NO 1E3190X0222 FOR ANTI-ICING SYSTEM CONTROL VALVE TYPE AUMA - EWD, SERIAL GB844301, BODY WCB STEEL, SIZE 150MM FOR GAS TURBINE - OFF-BASE SPARES - AIR INLET SYSTEM 5741/1	1
59529938	VALVE SPINDLE PACKING	NO IV3802X0022 FOR ANTI-ICING SYSTEM CONTROL VALVE TYPE AUMA - EWD, SERIAL GB844301, BODY WCB STEEL, SIZE 150MM FOR GAS TURBINE - OFF-BASE SPARES - AIR INLET SYSTEM 5741/1A	1
59529954	GROOVE PIN	NO 1V322735072 FOR ANTI-ICING SYSTEM CONTROL VALVE TYPE AUMA - EWD, SERIAL GB844301, BODY WCB STEEL, SIZE 150MM FOR GAS TURBINE - OFF-BASE SPARES - AIR INLET SYSTEM 5741/6	3
59529962	GASKET	NO RGASKETX212 FOR ANTI-ICING SYSTEM CONTROL VALVE TYPE AUMA - EWD, SERIAL GB844301, BODY WCB STEEL, SIZE 150MM FOR GAS TURBINE - OFF-BASE SPARES - AIR INLET SYSTEM 5741/7	1
53050010	O-RING & OIL SEAL SET	FOR ANTI-ICING VALVE AUMA SXO-04.21.01 COM NO 561 554 TYPE SAR 07.1-F10. 51981, TYPE SAR 07.1-F10, IP67, 32 L/MIN, LUB EPO, T.CLOSE: 15-30NM T.OPEN - 15-30NM DRG NO CSP 114700-F11E1 KMS 104/201 FOR GAS TURBINE - OFF-BASE SPARES - AIR INLET SYSTEMS 5742/8	1
53050029	LIMIT SWITCH SET	FOR AUMA ACTUATOR SXO-04-21-01, COM NO. 561554, NO M1/091-51981 TYPE SAR 07.1-F10. IP67, 32 L/MIN - LUB EPO, T-CLOSE: 15-30 NM, T-OPEN: 15-30NM DRG NO CSP 114700 - F11E1 KMS 104/201 FOR ANTI-ICING VALVE FOR GAS TURBINE - OFF-BASE SPARES - AIR INLET SYSTEM 5742/9	1

FRAME 9E OFF BASE GAS TURBINE SPARES

53050037	TORQUE SWITCH SET	FOR AUMA ACTUATOR SXO-04-21-01, COM NO. 561554, NO. M1/091-51981 TYPE SAR 07.1-F10, IP67, 32 L/MIN, LUB EPO, T.CLOSE: 15-30NM, T.OPEN: 15-30NM DRG NO CSP114700-F11E1 KMS 104/201. FOR ANTI-ICING VALVE FOR GAS TURBINE - OFF-BASE SPARES - AIR INLET SYSTEMS 5742/10	1
53311809	SENSOR NO RSS-1411-212F	FOR GT 3/4 INLET AIR SYSTEM - INFRARED DEWPOINT & ANTI-ICING CONTROLLER	1
53311817	POWER SUPPLY BOARD NO RSS-1411-PWS	FOR GT 3/4 INLET AIR SYSTEM - INFRARED DEWPOINT & ANTI-ICING CONTROLLER	1
53311825	LOGIC BOARD NO RSS-1411-LGS	FOR GT 3/4 INLET AIR SYSTEM - INFRARED DEWPOINT & ANTI-ICING CONTROLLER	1
53311833	OPTION B BOARD NO RSS-1411-DGS-A	FOR GT 3/4 INLET AIR SYSTEM - INFRARED DEWPOINT & ANTI-ICING CONTROLLER	1
53311841	CONTROLLER NO RSS-1411-R-CT	FOR GT 3/4 INLET AIR SYSTEM - INFRARED DEWPOINT & ANTI-ICING CONTROLLER	1
71163557	AIR INLET FILTER ELEMENT	NO 1619279700 REF 11 FOR ATLAS COPCO AIR COMPRESSOR TYPE GA 26 FOR GAS TURBINE - OFF-BASE SPARES 5747/1	4
71163565	OIL FILTER CARTRIDGE NO 1613-6105-00	REF 45 FOR ATLAS COPCO AIR COMPRESSOR TYPE GA 26 FOR GAS TURBINE - OFF-BASE SPARES 5747/2	4
71163573	MINIMUM PRESSURE VALVE KIT	NO 2901-0065-00 FOR ATLAS COPCO AIR COMPRESSOR TYPE GA 26 FOR GAS TURBINE - OFF-BASE SPARES 5747/3	4
71163581	OIL STOP VALVE KIT	NO 2901-0064-00 FOR ATLAS COPCO AIR COMPRESSOR TYPE GA 26 FOR GAS TURBINE - OFF-BASE SPARES 5747/4	4
71163590	UNLOADING VALVE KIT	NO 2901-0062-00 FOR ATLAS COPCO AIR COMPRESSOR TYPE GA 26 FOR GAS TURBINE - OFF-BASE SPARES 5747/5	4

FRAME 9E OFF BASE GAS TURBINE SPARES

71163603	SEPARATOR KIT NO 2901-0061-01	FOR ATLAS COPCO AIR COMPRESSOR TYPE GA 26 FOR GAS TURBINE - OFF-BASE SPARES 5747/6	4
53500628	DC TO DC CONVERTER NO PLC522	FOR GMI SYSTEM TYPE 3500 DRG NO A17744-19 FOR GAS TURBINE 5748/3	1
53500636	FACILITIES MODULE NO 59141	FOR GMI SYSTEM TYPE 3500 DRG NO A17744-19 FOR GAS TURBINE 5748/4	1
53500644	POWER SUPPLY AC-DC NO PLC592	FOR GMI SYSTEM TYPE 3500 DRG NO A17744-19 FOR GAS TURBINE 5748/5	1
53500652	HIGH TEMP SENSING HEAD 59930	FOR GMI SYSTEM TYPE 3500 DRG NO A17744-19 FOR GAS TURBINE 5748/6	2
70250014	SPARES KIT NO K263	FOR GAST PIB AIR COMPRESSOR MODEL 5LCF-10-P75Y, SERIAL NOS 0793, 1292 GAS TURBINES PIB AIR COMPRESSOR PACKAGE 5851/1	2
70250022	RELIEF VALVE - 107 PSI	FOR GAST PIB AIR COMPRESSOR MODEL 5LCF-10-P75Y, SERIAL NOS 0793, 1292	1
		GAS TURBINES PIB AIR COMPRESSOR PACKAGE	
70250030	PISTON COMPRESSOR 220/240V-50HZ	FOR DRYVENT UNIT PCC-3 S/N: 8095 & 8096.	2
		GAS TURBINES PIB AIR COMPRESSOR PACKAGE	
59404213	SPARES KIT NO K158-927	FOR ASCO DEWRANCE TYPE FBXE210C94 240V SOLENOID V/V, SERIAL NOS 1384B2, TPL0343 FOR PIB AIR COMPRESSOR PACKAGE GAS TURBINES 5851/2	3
59280913	ASCO DEWRANCE SOLENOID VALVE	TYPE FBXE210C94, 240V, SERIAL NOS 1384B2, TPL0343. GAS TURBINES - PIB AIR COMPRESSOR 5851/3	1
70320012	GASKET KIT	FOR PIB AIR COMPRESSOR NORGREN FILTER TYPE F13-000-A2T0 FOR GAS TURBINES 5851/4	1
70320020	SERVICE KIT NO F13-3-GK	FOR PIB AIR COMPRESSOR NORGREN FILTER TYPE F13-000-A2T0	1
70320063	GASKET KIT	FOR PIB AIR COMPRESSOR NORGREN FILTER TYPE F13-000-M1T0 FOR GAS TURBINES 5852/1	1

FRAME 9E OFF BASE GAS TURBINE SPARES

70320071	SERVICE KIT FOR NORGREN FILTER	FOR PIB AIR COMPRESSOR NORGREN FILTER TYPE F13-100-M1	1
70320128	NORGREN FILTER TYPE F73G-2GN-AT2	FOR PIB AIR COMPRESSOR	1
59692715	SOLENOID V/V REPAIR KIT	NO K56X00140DC. GAS TURBINES NOX MONITORS 5855/2	1